

# TruRyde®



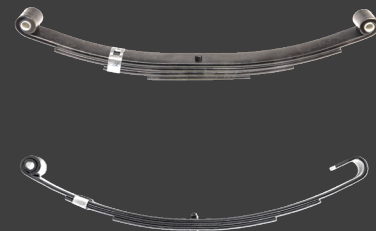
## MARINE PRODUCTS CATALOG

Axle, Suspension  
& Frame Components

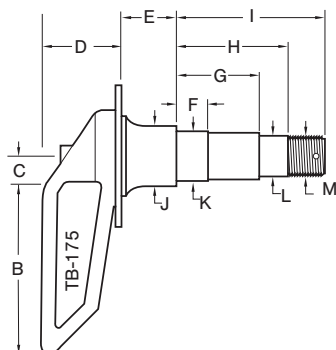
SUPPLYING THE WORLD.

**trp**®

TRP International, LLC.



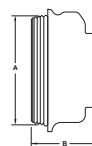
# Integrated Flange Drop Spindles



**HOT FORGED  
DROP MARINE**

PART #	AXLE	DIMENSIONS											UNIT WT.	
		A	B	C	D	E	F	G	H	I	J	K		L
SP-TB-175F	3,500 lb.	2.03"	4.75"	1.00"	2.25"	1.26"	0.91"	2.38"	3.34"	4.12"	1.72"	1.376"	1.062"	7.75 lb.

# Oil Caps



DEFENDER OIL CAP

## TRURYDE DEFENDER

PART #	PACKAGED PARTS KIT#	DESCRIPTION	DIMENSIONS			REF #	BOX QTY.	BOX WT.
			A	B	C			
DC-O-288	PP-DC-11	Dust Cap, Oil, 8K, 2.88"	2-7/8" - 12 UN2A	1.85"	1.50"	LCI85373928	100 pc.	48 lb.
DC-G-288	PP-DC-12	Dust Cap, Grease, 8K, 2.88"	2-7/8" - 12 UN2B	1.85"	1.50"	LCI85373929	100 pc.	48 lb.
DC-O-375	N/A	Dust Cap, Oil, 9K-16K, 3.75"	3-3/4" - 8 UN2B	2.33"	2.00"	K71-859-00	48 pc.	36 lb.
DC-G-375	N/A	Dust Cap, Grease, 9K-16K, 3.75"	3-3/4" - 8 UN2B	2.33"	2.00"	K71-859-00	48 pc.	36 lb.
DC-O-400	PP-DC-13	Dust Cap, Oil, 10K-16K, 4"	4" - 12 UN2A	2.33"	2.00"	LCI85373928	48 pc.	36 lb.
DC-G-400	PP-DC-14	Dust Cap, Grease, 10K-16K, 4"	4" - 12 UN2A	2.33"	2.00"	LCI85373928	48 pc.	36 lb.

Dust Caps (Lubed and Non-lubed), and Rubber Plugs also available

# Seals



GS-2250DLR

## DOUBLE LIP RUBBER COATED GREASE SEALS

PART #	AXLE CAPACITY	SHAFT DIAM.	BORE DIAM.	SEAL OD.	SEAL WIDTH	SPINDLE	REF. #	BOX QTY.	BOX WT.
GS-1250DLR	2,000 lb.	1.250"	1.983"	1.986"	0.406"	BT8	12194TC	1,120 pc.	49 lb.
GS-1500DLR	2,500 lb.	1.500"	1.983"	1.990"	0.250"	BT16	15192TC	1,680 pc.	54 lb.
GS-1687DLR	3,500 lb.	1.687"	2.561"	2.568"	0.500"	#84	168255TC	1,200 pc.	40 lb.
GS-1719DLR	3,500 lb.	1.719"	2.561"	2.568"	0.500"	#84	171255TC	480 pc.	39 lb.
GS-2125DLR	7,000 lb.	2.125"	3.371"	3.378"	0.375"	#42	21333TC	300 pc.	33 lb.
GS-2250DLR	8,000 lb.	2.230"	3.371"	3.378"	0.375"	#42	22333TC	300 pc.	35 lb.

Double Lip & Triple Lip spring loaded seals also available

# Galvanized Idler Hubs



RV1-H-655-HDG

PART #	PRE-GREASED PACKAGED PARTS KIT#	DESCRIPTION				UNIT WEIGHT	CASE QUANTITY	CASE WEIGHT
		AXLE CAP.	BOLT DIAM.	INNER RACE	OUTER RACE			
RVI-BT-5450-HDG	PP-RVGIK-2PG	2,500 lb.	5 on 4.50"	L-44610	L-44610	6.43 lb.	294 pc.	1,945 lb.
RVI-U-5450-HDG	PP-RVGIK-3PG	3,500 lb.	5 on 4.50"	L-68111	L-44610	7.20 lb.	294 pc.	2,170 lb.
RVI-U-5475-HDG	PP-RVGIK-4PG	3,500 lb.	5 on 4.75"	L-68111	L-44610	7.50 lb.	216 pc.	1,670 lb.
RVI-U-5500-HDG	PP-RVGIK-5PG	3,500 lb.	5 on 5.00"	L-68111	L-44610	7.80 lb.	216 pc.	1,740 lb.
RVI-U-6550-HDG	PP-RVGIK-7PG	3,500 lb.	6 on 5.50"	L-68111	L-44610	9.60 lb.	180 pc.	1,780 lb.
RVI-H-655-HDG	PP-RVGIK-8PG	6,000 lb.	6 on 5.50"	25520	15245	13.74 lb.	150 pc.	2,110 lb.
RVI-H-655-HDG-LS	N/A	6,000 lb.	6 on 5.50"	25520	15245	14.00 lb.	150 pc.	2,150 lb.
RVI-H-865-HDG	PP-RVGIK-9PG	7,000 lb.	8 on 6.50"	25520	14276	17.03 lb.	125 pc.	2,180 lb.
RVI-H-865-HDG-LS	N/A	7,000 lb.	8 on 6.50"	25520	14276	17.50 lb.	125 pc.	2,250 lb.
RVI-H-865-916-HDG	PP-RVGIK-10PG	7,000 lb.	8 on 6.50"	25520	14276	17.50 lb.	125 pc.	2,250 lb.

## ADDITIONAL SPECS

- Manufactured to automotive standards in ISO/TS-16949 registered factory
- Studs are 1/2" - 20 with zinc plating. (RVI-H-865-916 studs are 9/16" - 18)
- LS= Long Studs, 1/2"-20 x 2.625", for stronger clamping force and better wheel retention
- Fully integrated casting, machining, painting, and assembly operations
- ASTM test bar method used to monitor tensile strength

# Winches

## HAND WINCHES

PART #	DESCRIPTION	UNIT WT.	BOX QTY.	BOX WT	BOXES PER SKID	REF. #
TR-WH1K	Single-Speed Trailer Winch, 1,000 lb. Capacity, Zinc Plated	5.51 lb.	6 pc.	37 lb.	25 pc.	HW-1000
TR-WH1.4K	Single-Speed Trailer Winch, 1,400 lb. Capacity, Zinc Plated	5.86 lb.	6 pc.	40 lb.	25 pc.	HW-1400
TR-WH1.6K	Single-Speed Trailer Winch, 1,600 lb. Capacity, Zinc Plated	7.72 lb.	4 pc.	29 lb.	30 pc.	HW-1600
TR-WH2K	Two-Speed Trailer Winch, 2,000 lb. Capacity, Zinc Plated	8.27 lb.	4 pc.	35 lb.	30 pc.	HW-2000

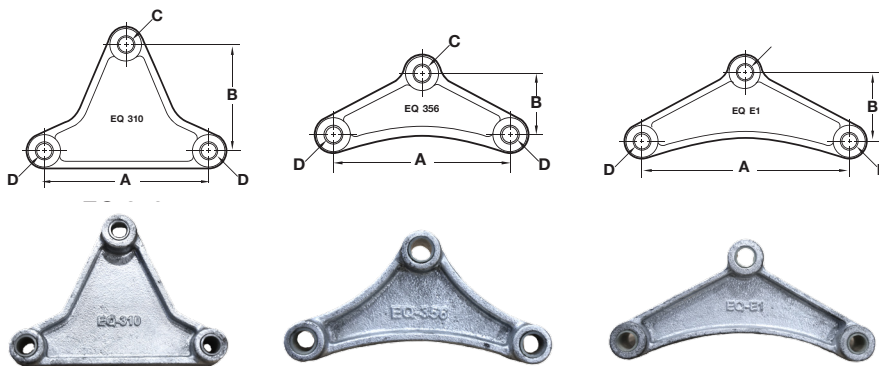


## BRAKE WINCHES

PART #	DESCRIPTION	UNIT WT.	BOX QTY.	BOX WT	BOXES PER SKID	REF. #
TR-WB1K	Self-Activating Brake Winch, 1,000 lb. Capacity, Zinc Plated	5.51 lb.	6 pc.	37 lb.	25 pc.	BW-1000
TR-WB1.5K	Self-Activating Brake Winch, 1,500 lb. Capacity, Zinc Plated	7.50 lb.	6 pc.	50 lb.	25 pc.	BW-1400

The specifications and dimensions above are for reference only.

# Marine Products



## GALVANIZED EQUALIZER SPRINGS

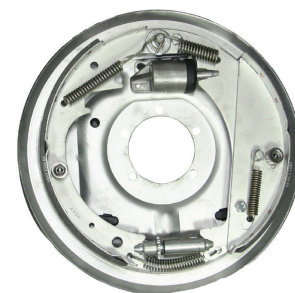
PART #	DIMENSIONS				UNIT WT.	CASE QTY.	CASE WT.
	A	B	C	D			
EQ-310Z - Galvanized	6.06"	4.00"	0.563"	0.563"	2.85 lb.	630 pc.	2,000 lb.
EQ-356Z - Galvanized	6.13"	2.50"	0.563"	0.563"	2.25 lb.	1,000 pc.	2,320 lb.
EQ-E1Z - Galvanized	7.75"	2.88"	0.563"	0.563"	2.75 lb.	700 pc.	2,100 lb.

## LEAF SPRINGS



PART #	DESCRIPTION	PALLET QTY.	PALLET WT.
DE-SW3-PC	3-Leaf Double Eye Spring 1750# 25.25", Powder Coated	300 pc.	2,340 lb.
DE-SW4-PC	4-Leaf Double Eye Spring 2500# 25.25", Powder Coated	200 pc.	2,760 lb.
DE-SW5-PC	5-Leaf Double Eye Spring 2900# 25.25", Powder Coated	180 pc.	2,038 lb.
S0-C3-PC	3-Leaf Spring Slipper Open 1750# 26.25", Powder Coated	200 pc.	2,428 lb.
S0-C4-PC	4-Leaf Spring Slipper Open 1750# 26.25", Powder Coated	200 pc.	2,974 lb.
S0-C5-PC	5-Leaf Spring Slipper Open 1750# 26.25", Powder Coated	150 pc.	2,613 lb.
SF-434117-PC	4-Leaf Spring Slipper Flat 2000# 30.00", Powder Coated	200 pc.	2,440 lb.

\*Any spring can be special ordered in full skid quantities with marine powder coating



## HYDRAULIC BRAKES

PART #	DESCRIPTION	UNIT WEIGHT	CASE QTY.	CASE WEIGHT
BK-40715X	RH, 10" Free Backing, Dacromet	9.59 lb.	156 pc.	1,602 lb.
BK-40716X	LH, 10" Free Backing, Dacromet	9.59 lb.	156 pc.	1,602 lb.
BK-42028X	RH, 12" Free Backing, Dacromet	14.66 lb.	117 pc.	1,822 lb.
BK-42029X	LH, 12" Free Backing, Dacromet	14.66 lb.	117 pc.	1,822 lb.

# TruRyde Disc Brake Kits

## 3.5K

5 LUG 1/2" STUDS, INTEGRATED ROTOR  
ZINC OR E-COAT FINISH



PART #	DESCRIPTION
DBI-3.5K-TR-ECOAT (Complete Kit)	TruRyde 3.5K Disc Kit, (2) Black E-Coat Integrated Rotors, and (2) Clear Zinc Calipers w/ Pads
DBI-3.5K-TR-ZINC (Complete Kit)	TruRyde 3.5K Disc Kit, (2) Clear Zinc Integrated Rotors, and (2) Clear Zinc Calipers w/ Pads
RTR/HUB-975-TR-ECOAT	9.75" RTR/HUB, 5-Lug Integrated 1/2" WS, E-Coat
RTR/HUB-975-TR-ZINC	9.75" RTR/HUB, 5-Lug Integrated , 1/2" WS, Zinc
CALP-3-6K-TR-ZINC	3-6K Caliper, Zinc w/ Pads

## 6K

6 LUG 1/2" STUDS, INTEGRATED ROTOR  
ZINC OR E-COAT FINISH



PART #	DESCRIPTION
DBI-6K-TR-ECOAT (Complete Kit)	TruRyde 6K Disc Kit, (2) Black E-Coat Integrated Rotors, (2) Top Mount E-Coat Brackets, and (2) Clear Zinc Calipers w/ Pads
DBI-6K-TR-ZINC (Complete Kit)	TruRyde 6K Disc Kit, (2) Clear Zinc Integrated Rotors, (2) Top Mount Clear Zinc Brackets, and (2) Clear Zinc Calipers w/ Pads
DBI-6K-TR-SM-ECOAT (Complete Kit)	TruRyde 6K Disc Kit, (2) Black E-Coat Integrated Rotors, (2) Side Mount E-Coat Brackets, and (2) Clear Zinc Calipers w/ Pads
DBI-6K-TR-SM-ZINC (Complete Kit)	TruRyde 6K Disc Kit, (2) Clear Zinc Integrated Rotors, (2) Side Mount Clear Zinc Brackets, and (2) Clear Zinc Calipers w/ Pads
RTR/HUB-1177-TR-ECOAT	11.77" RTR/HUB, 6-Lug Integrated, 1/2" WS, E-Coat
RTR/HUB-1177-TR-ZINC	11.77" RTR/HUB, 6-Lug Integrated, 1/2" WS, Zinc
CALP-3-6K-TR-ZINC	3-6K Caliper, Zinc w/ Pads
DBB-6K-TR-ECOAT	6K Bracket, E-Coat, Top Mount
DBB-6K-TR-ZINC	6K Bracket, Zinc, Top Mount
DBB-6K-TR-SM-ECOAT	6K Bracket, E-Coat, Side Mount
DBB-6K-TR-SM-ZINC	6K Bracket, Zinc, Side Mount

## ADDITIONAL SPECS

- Non-handed Caliper; less inventory requirement
- Inlet & Outlet Ports at 45 degree angle; more efficient bleeding system
- Vented Rotor; better airflow for a cooler unit, allows water to escape

\*One kit required per axle.

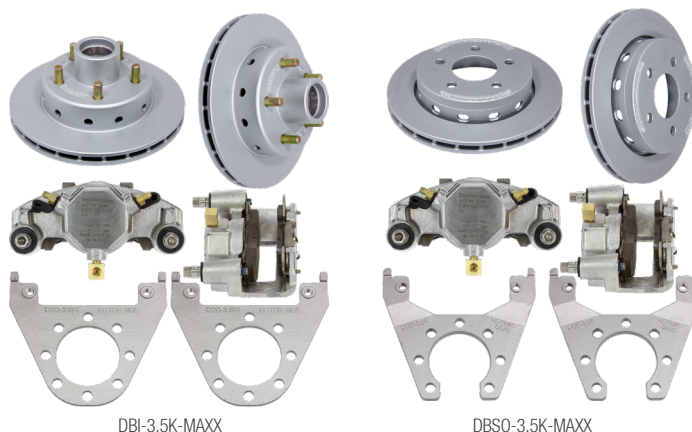
The specifications and dimensions above are for reference only.

# DeeMaxx Disc Brake Kits

## 3.5K

5 LUG 1/2" STUDS, INTEGRATED OR SLIP OVER ROTOR

PART #	DESCRIPTION
DBI-3.5K-MAXX RTR/HUB-102-MAXX CALP-3-6K-MAXX DBB-3.5KI-MAXX CALP-3-6K-BRAKE PAD	Integrated Kit Contains Rotor/Hubs, Calipers And Brackets For One Axle
DBSO-3.5K-MAXX RTR-109-MAXX CALP-3-6K-MAXX DBB-3.5K-MAXX CALP-3-6K-BRAKE PAD	Slip Over Kit Contains Rotor/Hubs, Calipers And Brackets For One Axle



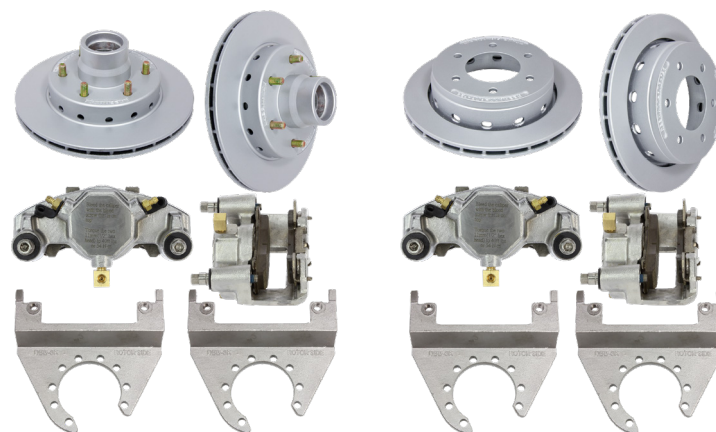
DBI-3.5K-MAXX

DBSO-3.5K-MAXX

## 6K

6 LUG 1/2" STUDS, INTEGRATED OR SLIP OVER ROTOR

PART #	DESCRIPTION
DBI-6K-MAXX RTR/HUB-120-MAXX CALP-3-6K-MAXX DBB-6K-MAXX CALP-3-6K-BRAKE PAD	Integrated Kit Contains Rotor/Hubs, Calipers And Brackets For One Axle
DBSO-6K-MAXX RTR-120-MAXX CALP-3-6K-MAXX DBB-6K-MAXX CALP-3-6K-BRAKE PAD	Slip Over Kit Contains Rotor/Hubs, Calipers And Brackets For One Axle



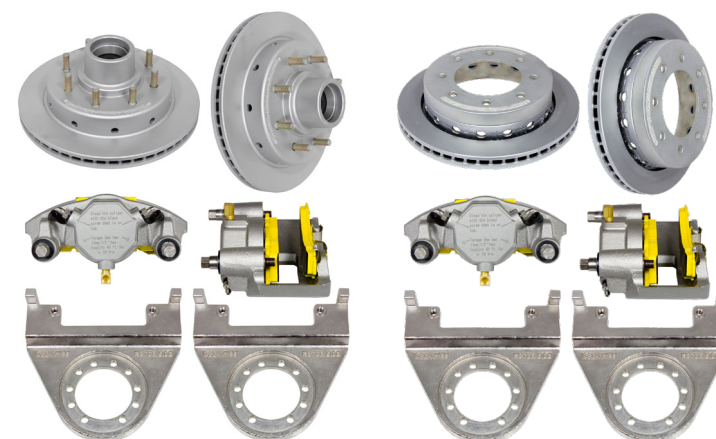
DBI-6K-MAXX

DBSO-6K-MAXX

## 7K

8 LUG 1/2", 9/16", 5/8" STUDS, INTEGRATED OR SLIP OVER ROTOR

PART #	DESCRIPTION
DBI-7K-MAXX RTR/HUB-131-7K-MAXX CALP-7-8K-MAXX DBB-7K-MAXX CALP-7-8K-BRAKE PAD	Integrated Kit Contains Rotor/Hubs, Calipers And Brackets For One Axle
DBSO-7K-MAXX RTR-131-7K-MAXX CALP-7-8K-MAXX DBB-7K-MAXX CALP-7-8K-BRAKE PAD	Slip Over Kit Contains Rotor/Hubs, Calipers And Brackets For One Axle
DBI-7K-9-MAXX RTR/HUB-131-8K-.56-MAXX CALP-7-8K-MAXX DBB-7K-MAXX CALP-7-8K-BRAKE PAD	Integrated Kit Contains Rotor/Hubs, Calipers And Brackets For One Axle
DBI-7K-10-MAXX RTR/HUB-131-8K-.62-MAXX CALP-7-8K-MAXX DBB-7K-MAXX CALP-7-8K-BRAKE PAD	Integrated Kit Contains Rotor/Hubs, Calipers And Brackets For One Axle



DBI-7K-MAXX

DBSO-7K-MAXX

\*One kit required per axle.

## 8K

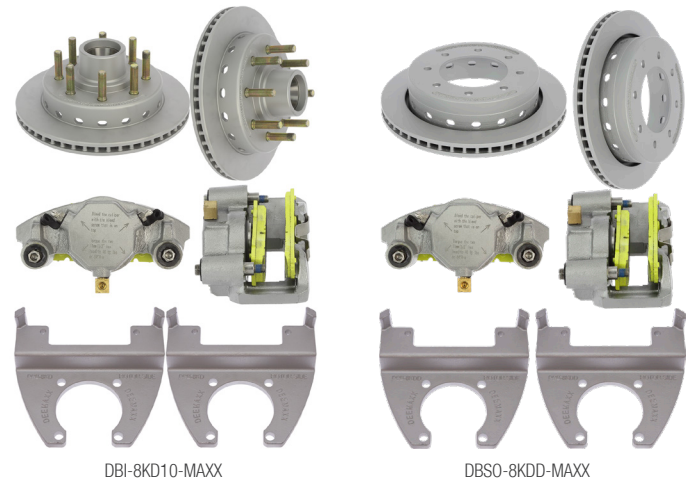
8 LUG 9/16" STUDS, INTEGRATED OR SLIP OVER ROTOR

8 LUG 5/8" STUDS, INTEGRATED OR SLIP OVER ROTOR

MAXX FINISH

### INTEGRATED NON-THREADED (GREASE)

PART #	DESCRIPTION
DBI-8KD9-NT-MAXX RTR/HUB-131-8KNT-.56-MAXX CALP 7-8K-MAXX w/HH PADS DBB-8KD-MAXX	One Axle Set Of Integral 8,000lb Maxx Coating Disc Brakes. 9/16" Studs
DBI-8KD10-NT-MAXX RTR/HUB-131-8KNT-.62-MAXX CALP 7-8K-MAXX w/HH PADS DBB-8KD-MAXX	One Axle Set Of Integral 8,000lb Maxx Coating Disc Brakes. 5/8" Studs
DBI-8KA10-NT-MAXX RTR/HUB-131-8KNT-.62-MAXX CALP 7-8K-MAXX w/HH PADS DBB-8KA-MAXX	One Axle Set Of Integral 8,000lb Maxx Coating Disc Brakes. 5/8" Studs



DBI-8KD10-MAXX

DBSO-8KDD-MAXX

### INTEGRATED THREADED (OIL)

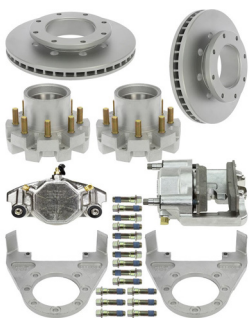
PART #	DESCRIPTION
DBI-8KD9-T-MAXX RTR/HUB-131-8KT-.56-MAXX CALP 7-8K-MAXX w/HH PADS DBB-8KD-MAXX	One Axle Set Of Integral 8,000lb Maxx Coating Disc Brakes. 9/16" Studs
DBI-8KD10-T-MAXX RTR/HUB-131-8KT-.62-MAXX CALP 7-8K-MAXX w/HH PADS DBB-8KD-MAXX	One Axle Set Of Integral 8,000lb Maxx Coating Disc Brakes. 5/8" Studs

### SLIP OVER

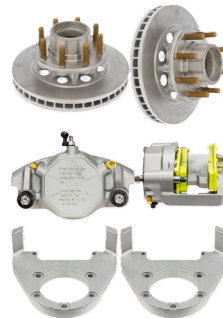
PART #	DESCRIPTION
DBSO-8KDD-MAXX RTR/HUB-131-8K-MAXX CALP 7-8K-MAXX w/HH PADS DBB-8KDD-MAXX	One Axle Set Of Slip Over 8,000lb Maxx Coating Disc Brakes. Can Be Used With 5/8" Or 9/16" Studs *Must Use Dexter Or Deemaxx Disc Idler Hub
DBSO-8KA-MAXX RTR/HUB-131-8K-MAXX CALP 7-8K-MAXX w/HH PADS DBB-8KA-MAXX	One Axle Set Of Slip Over 8,000lb Maxx Coating Disc Brakes. Can Be Used With 5/8" Or 9/16" Studs *Must Use Axis/Alko Or Rockwell Disc Idler Hub

## Single Wheel Disc Brakes

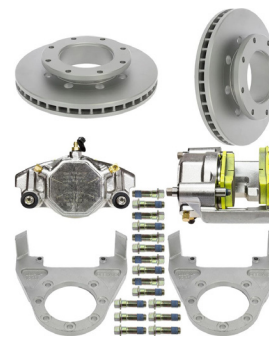
### 10-12K



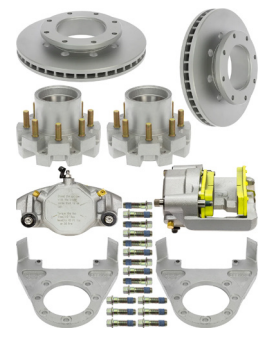
DBI-10KDL-SW-MAXX



DBI-10KAAQ-MAXX



DBSO-10-12KDL-SW-MAXX



DBI-12KDL-SW-MAXX

One (Axle) Set Of Integral 10,000 lb Maxx Disc Brakes For Dexter/Lippert Spindle

Includes Maxx Integral 13" Rotor, Maxx Caliper W Sm Pads, Maxx Bracket & Hub Mounting Bolts

\* Fits 16" Single Wheel Application W/ 5/8" Wheel Studs - Uses 387A Inner/25580 Outer Bearings.

One (Axle) Set Of Integral 10,000 lb Maxx Disc Brakes For Alko/Quality #99 Spindle

Includes Maxx Integral 13" Rotor, Maxx Caliper W Pads, Maxx Bracket & Hub Mounting Bolts \* Fits 17.5" Single Wheel Application W/ 5/8" Wheel Studs - Uses 28580 Inner /25580 Outer Bearings

One (Axle) Set Of 12,000 lb Maxx Disc Brakes For Dexter/Lippert #14T Spindle Includes 16-Rtr-Bolt 1/2-13 X 1.5" For 13" Rtr/Spc, Maxx Caliper W/Pads, Maxx Bracket And Hub Mounting Bolts

Uses 3984 Inner/28682 Outer Bearings

One (Axle) Set Of Integral 12,000 lb Maxx Disc Brakes For Dexter/Lippert Spindle Includes Maxx Integral 13" Rotor, Maxx Caliper W Sm Pads, Maxx Bracket & Hub Mounting Bolts

Uses 3984 Inner/28682 Outer Bearings.

The specifications and dimensions above are for reference only.

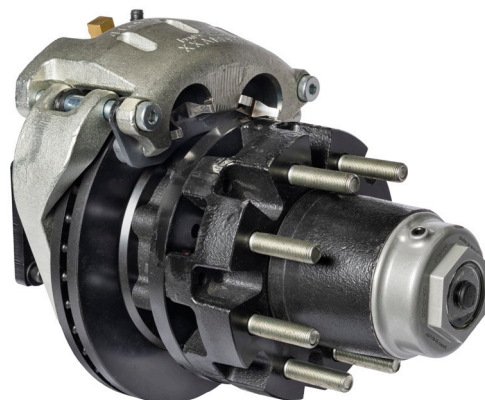
# Dual Wheel Disc Brakes

## 9-16K

PART #	DESCRIPTION
DBI-10KDL-DW-MAXX	One Axle set of Integral 10,000 lb. Maxx Coating Disc Brakes for Dexter/Lippert Spindle With 5.25" Inner Bearing shoulder to Brake Flange. Use 387A Inner / 25580 Outer Bearing Includes Hub, 32-RTR-Bolt 1/2-13 x 1.5" for 13" Rotor/Spc, Zinc Caliper w/ SM Pads, AND Zinc Bracket (7 Bolt) *Fits 16" Dual Wheel Wheel Application w/ 5/8" Wheel Studs
DBI-12KDL-DW-MAXX	One Axle set of Integral 12,000 lb. Maxx Coating Disc Brakes for Dexter/Lippert Spindle With 5.25" Inner Bearing shoulder to Brake Flange. Use 3984 Inner / 28682 Outer Bearing Includes Hub-12KDL, 32-RTR-Bolt 1/2-13 x 1.5" for 13" Rotor/Spc, Zinc Caliper w/ Black SM Pads, AND Zinc Bracket (7 Bolt) *Fits 16" Dual Wheel Wheel Application w/ 5/8" Wheel Studs
DBI-16KDL-DW-MAXX	One Axle set of Integral 16,000 lb. Maxx Coating Disc Brakes for Dexter/Lippert Spindle. Use 3984 Inner / 28682 Outer Bearing Includes Hub-16KDL, 32-RTR-Bolt 1/2-13 x 1.5" for 13" Rotor/Spc, Zinc Caliper w/ Black SM Pads, and Zinc Bracket (7 Bolt) *Fits 16" Dual Wheel Application w/ M22 Wheel Studs
DBB-10-16KDL-DW-ZINC	Disc Brake Bracket for 7 hole brake flange 10-16K Dexter/Lippert Dual Wheel Axle fits 11" Rotor, Zinc Coating
CALP-10-16KDW-ZINC	Disc Brake Bracket for 10-16K Axle Dual Wheel 2 - Piston Zinc Plated with Green Semi-metallic Brake Pads
RTR-11-10-16KDL-DW-MAXX	11" Bolt-on rotor for Dexter/Lippert with (8) 1" and (8) - .530" holes Maxx fits HUB-9-16K
RTR-10-16K-BOLT	Bolt, 1/2-13 x 1.5", 6 pt Hex w/flange Grade 8 Yellow Zinc Plated 3M22352 w/Blue Loctite, Torque Bolt to Rotor at 80 ft. lb.
HUB-11-10-16KDL-DW-SPCR-MAXX	Spacer for 11" Bolt on Rotor for Dexter/Lippert with 8 - 1/2" - 13UNC-2B and 8 - .530" holes, Maxx fits Hub 9-16K
RVI-10K-865-580	8 on 6.5" 10K Dexter/Lippert Oil Hub 4.75" Pilot, 25520 (Outer) and 382A (Inner) Bearing races and (Yellow) 5/8"-18 Wheels Studs DX# 008-288-03 9-10K GD Use 387A (Inner) and 25580 (Outer) Bearing
RVI-12K-865-580	8 on 6.5" 12K Dexter/Lippert Oil Hub 4.75" Pilot, Inner Bearing 3984 Cup/Race 3920 and Outer Bearing 28682 Cup/Race 28622 DX# 008-214-10
RVI-16K-8275-M22	8 on 275 mm M22 Wheel Studs 16K Dexter/Lippert Oil Hub, Inner Bearing 3984 Cup/Race 3920 and Outer Bearing 28682 Cup, Race 28622 DX# 088-401-05

### ADDITIONAL SPECS

- Fits 16" Dual Wheel or larger
- All parts are non-handed (L or R)
- Laser writing on caliper for bleeding instructions and torque specifications



DBI-12KDL-DW-MAXX

**UNIQUE BRACKET  
DESIGN PROVIDES  
TWICE AS MANY  
MOUNTING OPTIONS  
FOR CALIPER  
POSITION**

**EVERY  
CALIPER IS  
TESTED TO  
2000 PSI**

**120°  
BLEEDER  
DESIGN**

- Better bleeding
- Balanced system
- No more damaged bleeders

**PASSED THE  
SAE J2681  
BRAKE TEST**

# High Performance Brake Lines



## RUBBER BRAKE LINES

DOT-RFL-12"	DOT-RFL-16"	DOT-RFL-18"	DOT-RFL-24"	DOT-RFL-36"	DOT-RFL-38"	DOT-RFL-60"
DOT-RFL-72"	DOT-RFL-78"	DOT-RFL-220"	DOT-RFL-240"	DOT-RFL-260"	DOT-RFL-280"	DOT-RFL-312"

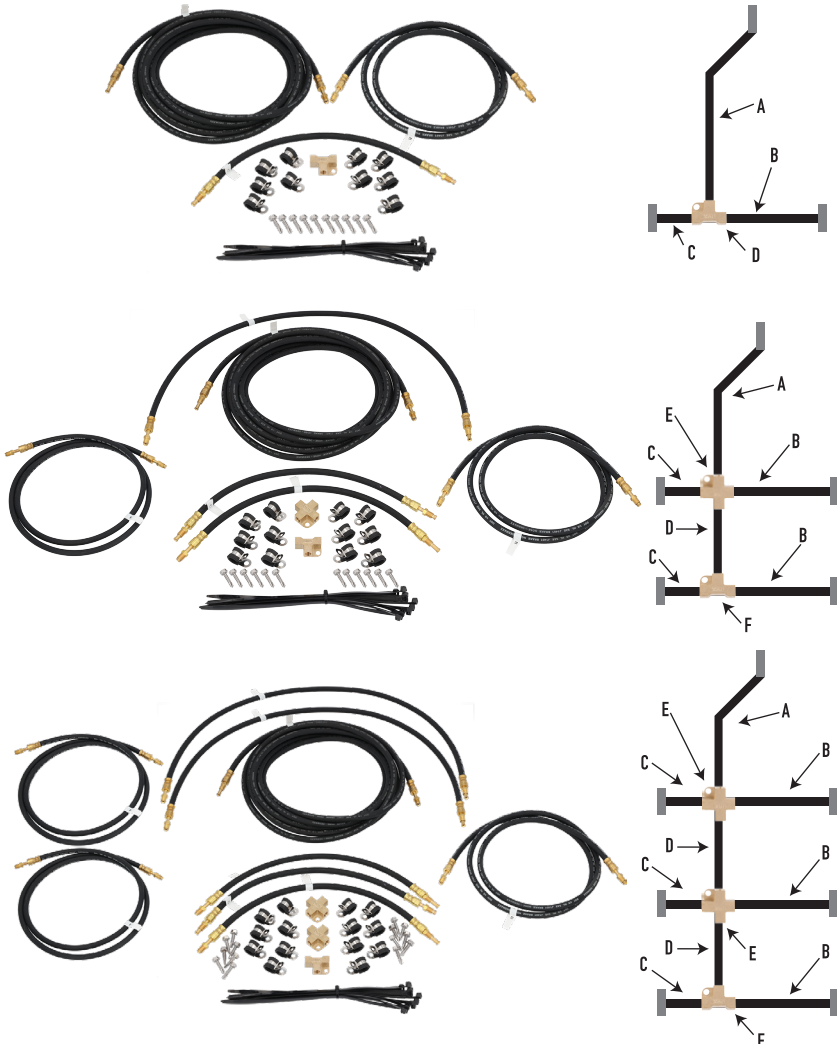
## STAINLESS STEEL BRAKE LINES

DOT-SSFL-18"	DOT-SSFL-24"	DOT-SSFL-30"	DOT-SSFL-36"
--------------	--------------	--------------	--------------

## BRAKE LINE ASSEMBLIES DESCRIPTION

DOT-BF3W	3 way 3 1/16" inverted flare inlets
DOT-BF4W	4 way 3 1/16" inverted flare inlets
DOT-BF90	90 degree elbow 3/16" inverted flare inlets
DOT-BFUNION	Coupler with 3 1/16" inverted flare inlets
DOT-HMC	Hose Mount, Clamp, Neoprene Cushioned, 304 SS, .375 in. O.D. Hose
DOT-NCTIE	Black UV protected nylon, self locking axle tie with slip prevention locking to secure brake lines to axle.
DOT-SSSDS	Stainless Steel Self Drilling Screw w/ Indented Hex Washer 6mm x 24 mm Indented Hex Washer #3 drill point 2/8" Hex Head

# DeeMaxx Brake Line Kits



## 18' SINGLE AXLE BRAKE LINE KIT (DOT-SA18K)

### DOT-SA18K CONTENTS:

- A - (1) 220" long flexible trailer brake line
- B - (1) 72" long flexible trailer brake line
- C - (1) 18" long flexible trailer brake line
- D - (1) Brass 3 way 'T' fitting (mounting screw included)
- (10) Brake Line Clamps 10 mounting screws included)
- (6) Axle Tie Straps

## 20' TANDEM AXLE BRAKE LINE KIT (DOT-TA20K)

### DOT-TA20K CONTENTS

- A - (1) 240" long flexible trailer brake line
- B - (2) 72" long flexible trailer brake line
- C - (2) 18" long flexible trailer brake line
- D - (1) 36" long flexible trailer brake line
- E - (1) Brass "4 way" fitting
- F - (1) Brass 3 way 'T' fitting (mounting screw included)
- (12) Brake Line Clamps (12 mounting screws included)
- (12) Axle Tie Straps

## 20' TRIPLE AXLE BRAKE LINE KIT (DOT-TR20K)

### DOT-TR20K CONTENTS

- A - (1) 240" long flexible trailer brake line
- B - (3) 72" long flexible trailer brake line
- C - (3) 18" long flexible trailer brake line
- D - (2) 36" long flexible trailer brake line
- E - 2) Brass "4 way" fittings (mounting screws included)
- F - (1) Brass 3 way 'T' fitting (mounting screw included)
- (14) Brake Line Clamps (14 mounting screws included)
- (18) Axle Tie Straps

The specifications and dimensions above are for reference only.

# Brake Actuators

## ELECTRIC-OVER-HYDRAULIC

DeeMaxx/Deutsche Hydrapro™ developed their Hydrapro Electric Over Hydraulic (EOH) Brake Actuator with a global German hydraulic pump manufacturer with over 90 years of experience providing innovative hydraulic drive and control technologies.

Our electric-over-hydraulic brake actuator's quality and simplicity gives you the necessary reliability for a trailer braking system. In addition, it has a superior response time that delivers shorter stopping distances, which gives the driver confidence while towing. DeeMaxx is the only company that offers 360° brake line position connection,



### ANODIZED, T6-GRADE EXTRUDED ALLOY HOUSING

protects from different environments

### INDEPENDENTLY SEALED FLUID TANK

provides extra fluid reserves

### 3X LONGER LASTING DURABILITY IN EXTREME TESTING

PART #	DESCRIPTION
TR-EOHA1000	1000 psi for Drum Brakes w/ 8k or Lower Axles
TR-EOHA1200	1200 psi for Drum Brakes w/ 8k or Higher Axles
TR-EOHA1600	1600 psi for Disc Brakes
TR-EOHA1600X	1600 psi w/ Larger Fluid Capacity 28.7 oz.

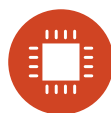


TR-EOHA1600



### HIGH-POWERED DC MOTOR

with minimal moving parts for reliability



### ROBUST ELECTRONICS BOARD

with protective coating for corrosion resistance

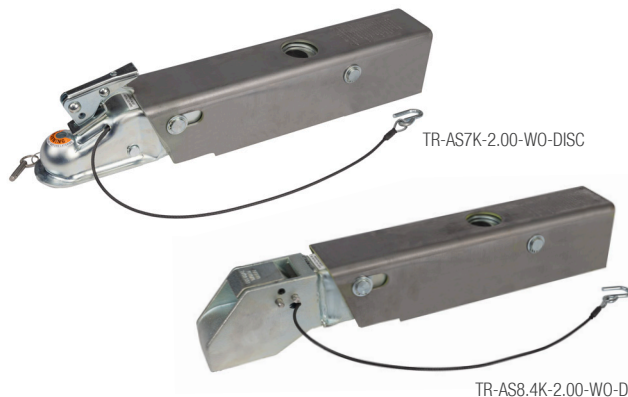


### 2-YEAR WARRANTY

giving you peace of mind

## SURGE

PART #	DESCRIPTION
TR-AS7K-2.00-WO-DISC	7K, 2" Ball, Weld-On, Disc
TR-AS8.4K-2.00-WO-DISC	8.4K, 2" Ball, Weld-On, Disc



TR-AS7K-2.00-WO-DISC

TR-AS8.4K-2.00-WO-DISC

# Jacks



TR-JSWWM1K-10



TR-JSWBMD1.5K-10



TR-JSWBM1.2K-10

## SIDE WIND MARINE JACKS

PART #	MOUNTING PLATE #	LIFT CAP.	DESCRIPTION	UNIT WT.	CASE QTY.	CASE WT.	REF. #
TR-JSWWM1K-10	TR-AMJMBK-1K	1,000 lb.	Side Wind Swivel, Weld-On, w/6" Caster	13.20 lb.	150 pc.	2,020 lb.	MJ-1000W
TR-JSWBM1.2K-10	TR-AMJMBK-1.2K	1,200 lb.	Side Wind Swivel, Bolt-On, w/6" Caster	14.70 lb.	120 pc.	1,801 lb.	MJ-1200B
	TR-AMJMBK-1.5K*						
TR-JSWBM1.5K-10	TR-AMJMBK-1.5K	1,500 lb.	Side Wind Swivel, Bolt-On, w/8" Caster	19.10 lb.	100 pc.	1,950 lb.	MJ-1500B
TTR-JSWBMD1.5K-10	TR-AMJMBK-1.5K	1,500 lb.	Side Wind Swivel, Bolt-On, w/6" Dual Caster	19.60 lb.	90 pc.	1,804 lb.	MJ-1500B-DWL
TR-JSWFBM2.5K-28	N/A (welded)	2,500 lb.	Square Side Wind Fixed, Bolt-On, w/jack Ft	25.70 lb.	100 pc.	2,610 lb.	MJSQ-2500B

\*Mounting plates (below) are different and not interchangeable. Zinc Plated

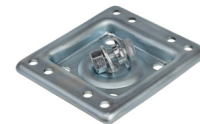
## Replacement Marine Handles

PART #	DESCRIPTION	REF #
TR-AMJHSW-1K	Replacement Marine Jack Handle for Side Wind, 1K	MJ-1000B-HD
TR-AMJHSW-1.2K	Replacement Marine Jack Handle for Side Wind, 1.2K	MJ-1200B-HD
TR-AMJHSW-1.5K	Replacement Marine Jack Handle for Side Wind, 1.5K	MJ-1500B-HD

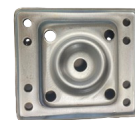


## Replacement Marine Mounting Brackets

PART #	DESCRIPTION	REF #
TR-AMJMBK-1K	Replacement Marine Jack Mounting Bracket Kit, 1K	MJ-1000B-MK
TR-AMJMBK-1.2K	Replacement Marine Jack Mounting Bracket Kit, 1.2K	MJ-1200B-MK
TR-AMJMBK-1.5K	Replacement Marine Jack Mounting Bracket Kit, 1.5K	MJ-1500B-MK



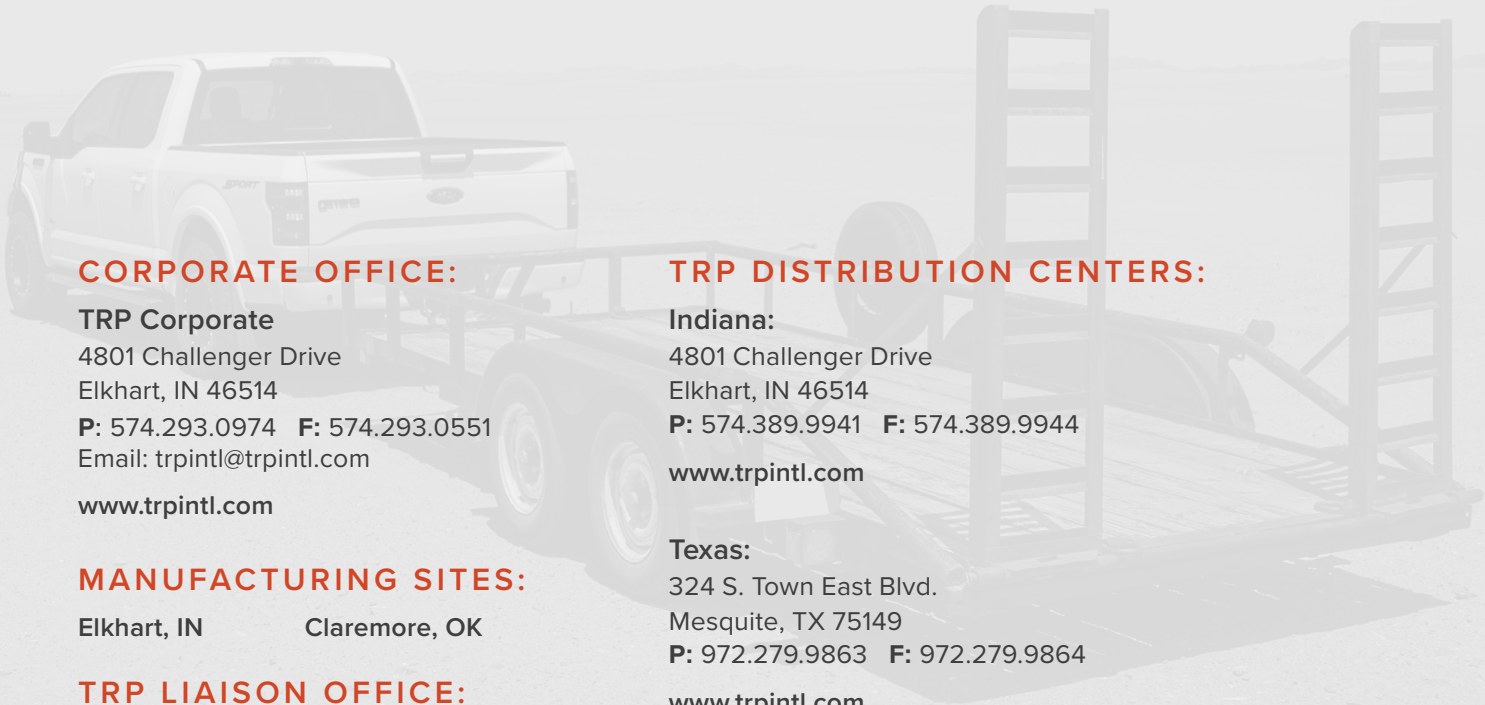
TR-AMJMBK-1K



TR-AMJMBK-1.2K



TR-AMJMBK-1.5K



**CORPORATE OFFICE:**

TRP Corporate  
4801 Challenger Drive  
Elkhart, IN 46514  
P: 574.293.0974 F: 574.293.0551  
Email: trpintl@trpintl.com  
www.trpintl.com

**TRP DISTRIBUTION CENTERS:**

**Indiana:**  
4801 Challenger Drive  
Elkhart, IN 46514  
P: 574.389.9941 F: 574.389.9944  
www.trpintl.com

**MANUFACTURING SITES:**

Elkhart, IN      Claremore, OK

**Texas:**  
324 S. Town East Blvd.  
Mesquite, TX 75149  
P: 972.279.9863 F: 972.279.9864  
www.trpintl.com

**TRP LIAISON OFFICE:**

TRP China – Hefei, China  
TRP Italy – Erba, Italy



TRP International, LLC.

SUPPLYING THE WORLD.

