

**TruRyde**<sup>®</sup>



---

## PRODUCTS CATALOG

Agricultural Products

SUPPLYING THE WORLD.

**trp**<sup>®</sup>

TRP International, LLC.



# LETTER FROM THE PRESIDENT

Since 2011, TRP International has provided components such as spindles, hubs, drums, brakes, bearings, seals, dust caps, and fasteners to the Agricultural market. More recently, TRP incorporated its line of jacks and couplers from the high speed business to include in the agricultural offerings.

TRP combines domestic state-of-the-art machining and assembly capabilities with extensive global sourcing to provide cost-effective solutions and on-time delivery. We offer rapid response capacity for emergency requirements, prototyping, and product co-development, and have access to an infinite variety of product finishes.

Our commitment to quality goes beyond the products we manufacture and extends into our commitment to superior customer service. We have invested in upgrades to our quality systems and have significantly upgraded our product launch, planning, and scheduling processes for faster response times.

We are deeply grateful to our customers, vendors, and employees for their ongoing support, without which our success would not be possible. We value these relationships and remain committed to being loyal and dedicated partners well into the future.

We appreciate your interest in our Agricultural Components catalog and look forward to speaking with you about your product needs. The TRP International team is ready to serve you, our valued customer.

Sincerely,



**Chris Mileger**

President,  
TRP International, LLC.

# TABLE OF CONTENTS

<b>TRP INTERNATIONAL, LLC.</b> .....	4-7
<b>EMCO INDUSTRIES</b> .....	8-9
<b>AG PRODUCTS</b>	
AG Spindles.....	10-11
AG Hub Glossary.....	12
4 Bolt AG Hubs (10-4, 12-4, 669, 633).....	13
5 Bolt AG Hubs (20-5, 736, 511, 25-5, 719).....	14
6 Bolt AG Hubs (30-6, 35-6, 888, 611, 803, 660).....	15-17
8 Bolt AG Hubs (45-8, 778, 813B, 819B, 821, 60-8B, 75-8B, 80-8B).....	18-19
10 Bolt AG Hubs (871B, 873B, 881, 882, 981).....	20-21
AG Brake Drums / AG Hydraulic Brakes.....	22
Tapered Roller Bearings.....	23
AG Grease Seals.....	24
AG Dust Caps.....	25
Spindle Fasteners.....	26
Fasteners / U-Bolts.....	27
<b>JACKS &amp; COUPLERS</b>	
Trailer Frame Jacks.....	28-29
Couplers.....	30-32
Winches.....	32-33
Surge Actuators.....	33
Accessories & Parts.....	34-35
<b>HIGH SPEED PRODUCTS</b> .....	36-37
<b>EMCO INDUSTRIES</b> .....	37
<b>CUSTOM MANUFACTURED COMPONENTS</b> .....	38
<b>TERMS &amp; CONDITIONS</b> .....	39



THROUGHOUT THIS CATALOG A TRP SERVICE MARK APPEARS NEXT TO THOSE PRODUCTS MANUFACTURED BY TRP.

# OUR STRATEGY

## MISSION STATEMENT

Our mission is to provide our customers with an expansive line of quality products distributed on schedule, at competitive prices, with responsive and professional service.

## VISION STATEMENT

The TRP group of companies will be a leading global supplier of axle, suspension, and other frame and trailer components to a variety of ground transportation equipment industries by providing excellent products and services to our customers, challenging opportunities for our employees, and positive contributions to our communities.

## QUALITY POLICY

TRP International, LLC. is committed to using proven quality management principles to safely produce and source quality products and services that exceed customer expectations for value, performance, and reliability through continual improvement of our business systems.



>TRP ELKHART, IN  
CORPORATE  
OFFICE



>TRP MESQUITE, TX  
DISTRIBUTION  
& SALES



>EMCO INDUSTRIES  
CLAREMORE, OK



>HEMCO INDUSTRIES  
HAIXING COUNTY  
CHINA

# OUR CORE VALUES



## PEOPLE MATTER

People-oriented beliefs and values. Treating everyone with dignity, respect, understanding, and acting without prejudice. Offering mentorship, development, and empowerment.



## CUSTOMER FOCUSED

Serving both internal team members and external customers' needs with a commitment to exceptional and timely support.



## DOING RIGHT

Commitment to honesty, integrity, trust, and accountability. Decisions and actions benefiting our people, our customers, our vendors, and our communities.



## RESULTS DRIVEN

Taking care of our people and partners in the areas of quality of life, service, and products. Focused on accurate, on-time delivery. Working with a proactive and positive attitude.



# OUR EXPERTISE



## ENGINEERING

Our engineering staff has experience in various design and manufacturing environments including leaf springs, tapered roller bearings, closed-die forgings, metal stampings, and CNC machining. Our resources include professional mechanical, quality, and metallurgical engineers. With these skills, we are striving every day to improve the overall cost and quality of the products we offer.



## MANUFACTURING

The TRP companies take pride in the capabilities and efficiency of each piece of equipment used to manufacture our products. We strive to incorporate lean principles to keep costs down in our production facilities. Each facility takes pride in shipping quality products and maintains a quality system that builds the framework for verifying that we meet customer specifications.



## INTERNATIONAL TRADE

With over three decades of international trade experience and qualified TRP personnel working through liaison offices in Italy and China, we have the expertise necessary to communicate, consult, coordinate and execute the many facets of importing products to North America from abroad.



## DISTRIBUTION

With state-of-the-art technology for order processing and fulfillment combined with strategically located distribution centers, we can effectively serve the requirements of customers across the U.S., as well as Canada and Mexico. Our constant attention to logistics and evaluation of carrier performance and pricing, assures the most efficient, cost-effective shipping methods resulting in faster delivery and lower total product costs.

# TRP AGRICULTURAL DIVISION

**TRP Agricultural Division is a supplier of spindles, hubs, drums, brakes, bearings, grease seals, dust caps and other related components to the agricultural market.**

While we are committed to carrying an extensive inventory of the most popular items, we have the resources in place to work with customer designed products as well. By utilizing our domestic manufacturing capabilities, we provide a broad range of high-quality, competitively priced components.



HUBS  
& DRUMS

SPINDLES

JACKS,  
COUPLERS  
& WINCHES

# EMCO INDUSTRIES

## ABOUT EMCO INDUSTRIES

At EMCO Industries, we eat, live, and breathe spring steel. Manufacturing and distributing spring steel is our passion, which shows in our customer satisfaction.

With over thirty years in business, we have become well known for our complete line of leaf springs, agricultural components, and other heat-treated products. Our leaf springs can be found on heavy-duty trailers, RVs, boat trailers, open and closed utility trailers, specialty vehicles, agricultural equipment, and many other applications.

## OUR HIGH-QUALITY PRODUCTS

EMCO Industries is a different kind of leaf spring manufacturer. We have the product knowledge and know-how to solve many spring-related problems, and we are the only domestic manufacturer with a company-owned facility in China. This allows us the flexibility to provide our customers with the best solution possible while maintaining control during

the entire process, from receiving your order until the product reaches your dock.

We have built our business on knowledge, continuous improvements, innovation, globalism, and professionalism. At the core of our company's approach lies lean manufacturing. This commitment drives us to continually seek opportunities to reduce expenses and enhance quality.

## HEADQUARTERS AND FACILITIES

Our 95,000 square-foot manufacturing facility in Claremore, Oklahoma is centrally located in the U.S., minimizing freight charge and improving delivery times.

Our 200,000 square-foot Chinese manufacturing facility located in the Hebei Province, near Tianjin's port offers great access to ship products to the U.S., or wherever our customers require them. Our Chinese facility allows us to offer a blended supply solution to our customers.



In 2016, after merging with TRP International, LLC. with warehouse and distribution facilities in Elkhart, Indiana and Mesquite, Texas (Dallas county), together we are the ONLY spring supplier that can honestly say we have the solutions for your leaf spring needs.

## UNWAVERING BACKBONE

From the earliest days of modern hauling trailers to their horse-drawn wagon forbearers, one component that has remained a constant is the highly functional and reliable leaf spring.

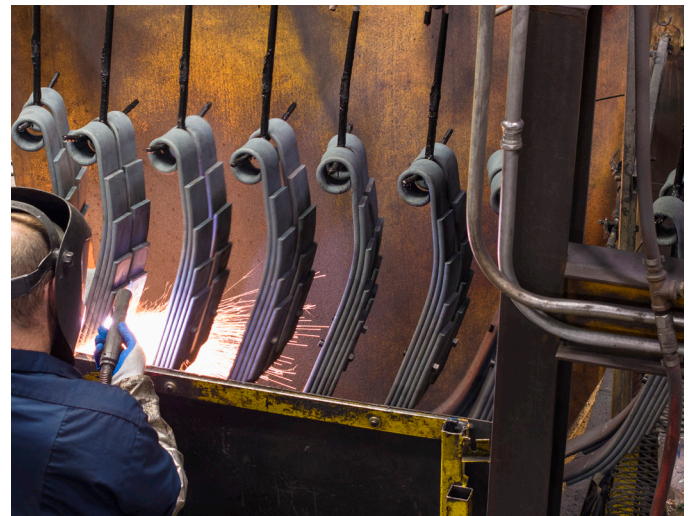
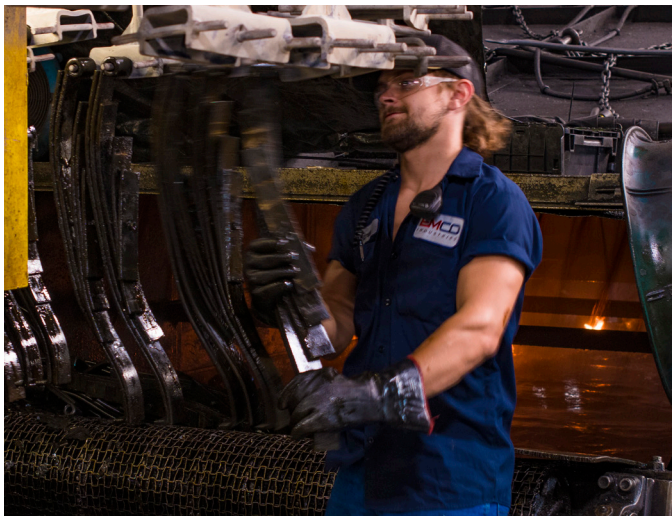
Trailers made for hauling come in three varieties: light-duty, medium-duty, and heavy-duty. Whatever size or type of load arc hauling, one thing they all have in common is that they need the right kind of suspension. Everything literally rides on the suspension. Leaf spring suspensions stand out as both reliable and cost-effective. They have been serving the hauling industry for years, with a proven track record.

## THE CRAFTSMANSHIP

Manufacturing leaf springs correctly is a meticulous operation. EMCO begins with automotive-grade, high carbon specialty steel. The material is then specifically processed to create EMCO's leaf springs.

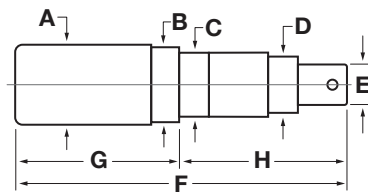
EMCO has advanced heat-treating capabilities and the steel undergoes rigorous preparation for its final purpose. It's the quality of steel and the sophisticated heat-treating processes that is at the heart of our leaf spring quality.

EMCO'S highly-automated operations seamlessly produce hundreds of thousands of leaf springs every month, meeting the demands of our customer base. It's this quality and capacity that has made EMCO the undisputed leading supplier of springs to the light-and medium-duty trailer market which has driven the expansion into the heavy-duty, 22.5K axle leaf spring segment.

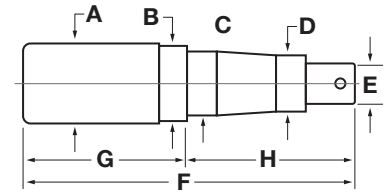


# AG Spindles

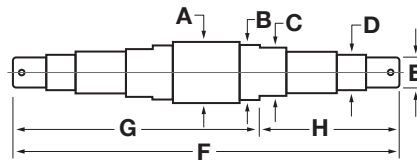
TRP offers a large selection of machined spindles in straight, double ended or fork to meet your requirements. For special applications, we offer machining capabilities of bar stock up to 30" in length and 5" in diameter through the spindle. Other capabilities include milling, drilling, tapping, and keyways.



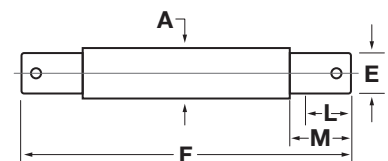
Type W



Type X



Type Y



Type U

PART NUMBER	#	DIMENSIONS								FITS HUBS
		A	B	C	D	E	F	G	H	
SP-104125-085	1	1.250"	1.250"	1.000"	1.000"	3/4" - 16"	8.50"	4.03"	4.47"	10-4
SP-124163-100	2	1.625"	1.625"	1.250"	0.750"	5/8" - 18"	10.00"	6.88"	3.12"	12-4
SP-669163-100	3	1.625"	1.500"	1.250"	0.750"	5/8" - 18"	10.00"	5.34"	4.66"	669
SP-633163-105	4	1.625"	1.500"	1.250"	0.750"	3/4" - 16"	10.50"	5.84"	4.66"	633
SP-205163-100	5	1.625"	1.625"	1.250"	0.750"	5/8" - 18"	10.00"	6.00"	4.00"	20-5, 20-6
SP-736163-105	6	1.625"	1.500"	1.250"	0.750"	3/4" - 16"	10.50"	5.84"	4.66"	736, 511
SP-255175-125	7	1.750"	1.750"	1.375"	1.250"	3/4" - 16"	12.50"	8.66"	3.84"	25-5, 25-6
SP-719175-115	8	1.750"	1.500"	1.375"	1.250"	7/8" - 14"	11.50"	7.13"	4.38"	719
SP-306175-120	9	1.750"	1.750"	1.500"	1.250"	3/4" - 16"	12.00"	7.53"	4.47"	30-6
SP-356200-130	10	2.000"	2.000"	1.625"	1.250"	3/4" - 16"	13.00"	7.81"	5.19"	35-6
SP-888175-105	11	1.750"	1.625"	1.500"	1.250"	7/8" - 14"	10.50"	6.66"	3.84"	888
SP-888200-125	12	2.000"	1.625"	1.500"	1.250"	7/8" - 14"	12.50"	8.66"	3.84"	888
SP-888200-140	12A	2.000"	1.625"	1.500"	1.250"	7/8" - 14"	14.00"	10.66"	3.84"	888
SP-611175-140	13	1.750"	1.750"	1.500"	1.250"	1" - 14"	14.00"	10.00"	4.00"	611

• If you would like additional information regarding our machining capabilities, contact your sales representative

*The specifications and dimensions above are for reference only.*

AG SPINDLES PART  
NUMBER DESCRIPTIONS

SPINDLE                      HUB REFERENCE                      BAR STOCK DIAMETER 2.000"                      TO ADD NUT, WASHER AND COTTER PIN, ADD "NWC"                      OVERALL LENGTH 12.5"

# SP-888200-NWC-125



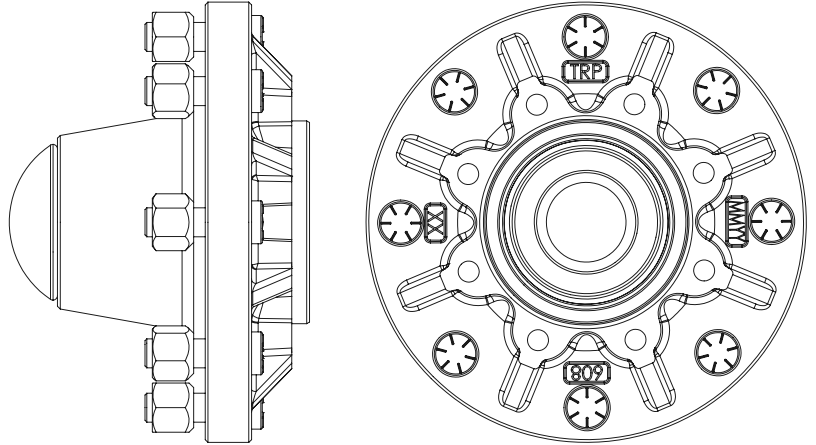
PART NUMBER	#	DIMENSIONS								FITS HUBS
		A	B	C	D	E	F	G	H	
SP-887248-150	14	2.438"	2.250"	1.625"	1.250"	7/8" - 14"		-	-	887, 890
SP-783200-150	15	2.000"	1.875"	1.625"	1.250"	7/8" - 14"		8.62"	4.38"	783
SP-803213-155	16	2.125"	2.000"	1.790"	1.375"	7/8" - 14"		9.39"	6.11"	778, 803, 813
SP-458225-140	17	2.250"	2.250"	1.780"	1.250"	3/4" - 16"		8.98"	5.02"	45-8
SP-778213-155	18	2.125"	2.000"	1.790"	1.375"	7/8" - 14"		9.39"	6.11"	778, 803, 813
SP-819275-145	19	2.750"	2.500"	2.000"	1.313"	7/8" - 14"		7.99"	6.50"	819, 821
SP-608275-140	20	2.750"	2.750"	2.165"	1.625"	1" - 14"		8.53"	5.47"	60-8
SP-758300-160	21	3.000"	3.000"	2.250"	1.625"	1" - 14"		9.41"	6.59"	75-8
SP-808300-160	22	3.000"	2.750"	2.165"	1.625"	1" - 14"		9.50"	6.50"	80-8
SP-871313-175	23	3.125"	3.000"	2.500"	1.750"	1-1/4" - 12"		10.88"	6.63"	871
SP-873338-175	24	3.375"	3.375"	2.750"	1.750"	1-1/4" - 12"		10.77"	6.73"	873
SP-873350-175	24A	3.500"	3.375"	2.750"	1.750"	1-1/4" - 12"		10.77"	6.73"	873
SP-881450-255	25	4.500"	4.375"	3.540"	2.625"	2" - 12"		18.50"	8.00"	881, 882, 981
SP-22542	26	2.250"	2.230"	1.749"	1.249"	1" - 14"		6.00"	5.00"	660

- Specify CD for cold roll and HIR for hot roll when ordering
- All spindle part numbers noted above are based on Type W Spindle
- To add nut, washer and cotter pin to any spindle add "NWC" to the end of the spindle part number
- Additional spindles manufactured to customer specifications
- AG Spindles will be CD1045 material unless specified otherwise. Exception is SP-22542, which is HR1045 material.

*The specifications and dimensions above are for reference only.*

# AG HUB GLOSSARY

- BOLT CIRCLE** Normal diameter which bolt holes are located.
- CAPACITY** Load rating given to a hub based on 20 m.p.h. maximum speed, using recommended wheel offset.
- PILOT** Normal diameter center hole that fits over hub or axle.
- WHEEL OFFSET**
  - NEGATIVE OFFSET, OR OUTSET:** Is when the center line of the wheel is located outboard or away from the face of the hub.
  - POSITIVE OFFSET, OR INSET:** Is when the center line of the wheel is located inboard or behind the face of the hub.
  - ZERO OFFSET:** Is when the center line of the wheel is located directly in line with the face of the hub.



AGRICULTURE

HUB REFERENCE  
H = HUB  
D = DRUM

6 BOLT ON  
6.0" BOLT  
CIRCLE

1 = THREADED  
2 = STUDDED  
GREASE ZERK

AG HUB AND  
DRUM PART  
NUMBER  
DESCRIPTIONS

## AG-H8886600-1Z

AGRICULTURE

HUB REFERENCE  
H = HUB  
D = DRUM

MACHINED  
FOR BRAKE

8 BOLT ON  
8.0" BOLT  
CIRCLE

1 = THREADED  
2 = STUDDED

GREASE ZERK

COMPLETE HUB  
ASSEMBLY INCLUDES  
BEARINGS, DUST  
CAP AND SEAL

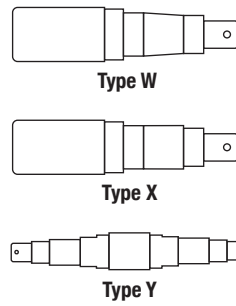
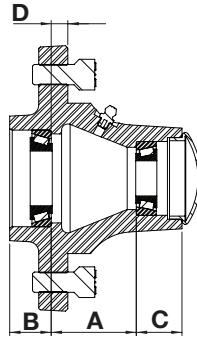
\*HUB IS NOT ASSEMBLED

## AG-H608B8800-2ZHA



# AG Hubs - 4 Bolt

5.00" BOLT CIRCLE  
3.62" PILOT



633  
Shown

HUB REFERENCE	10-4*	12-4	669	633
Capacity Rating	1000#	1250#	1250#	1500#
Wheel Offset	0.38" Negative	0.38" Negative	0.38" Negative	0.38" Negative
<b>Hub - Part #</b>	<b>AG-H1044500-1Z</b>	<b>AG-H1244500-1Z</b>	<b>AG-H6694500-1Z</b>	<b>AG-H6334500-1Z</b>
Inner Cup - Part #	L-44610	LM-67010	LM-67010	LM-67010
Outer Cup - Part #	L-44610	LM-11910	LM-11910	LM-11910
Wheel Stud - Part#	N/A	N/A	N/A	N/A
<b>Hub Assembly - Part #</b>	<b>AG-H1044500-1ZHA</b>	<b>AG-H1244500-1ZHA</b>	<b>AG-H6694500-1ZHA</b>	<b>AG-H6334500-1ZHA</b>
Hub - Part #	AG-H1044500-1Z	AG-H1244500-1Z	AG-H6694500-1Z	AG-H6334500-1Z
Inner Cone - Part #	L-44643	LM-67048	LM-67048	LM-67048
Outer Cone - Part #	L-44643	LM-11949	LM-11949	LM-11949
Dust Cap - Part #	AG-DC-198Z	AG-DC-195Z	AG-DC-195Z	AG-DC-2030Z
Wheel Bolt - Part #	AG-WB1000Z	AG-WB1000Z	AG-WB1000Z	AG-WB1000Z
Wheel Nut - Part #	N/A	N/A	N/A	N/A
Grease Seal - Part #	AG-GS-19871250SL	AG-GS-23321625SL	AG-GS-23321500SL	AG-GS-23321500SL

SPINDLE				
Spindle - Part #	SP-104125-085	SP-124163-100	SP-669163-100	SP-633163-105
Spindle # (see pg. 10-11)	1	2	3	4
Nut - Part #	AG-FA-SN0750	AG-FA-SN0625	AG-FA-SN0625	AG-FA-SN0750
Washer - Part #	AG-FA-SW0750	AG-FA-SW0625	AG-FA-SW0625	AG-FA-SW0750
Cotter Pin - Part #	AG-FA-CP175	AG-FA-CP175	AG-FA-CP175	AG-FA-CP175
<b>Types Available</b>	<b>W,X,Y</b>	<b>W,X,Y</b>	<b>W,X,Y</b>	<b>W,X,Y</b>

HUB DIMENSION REFERENCE				
<b>A</b>	2.53"	1.16"	1.16"	2.05"
<b>B</b>	0.85"	0.94"	0.94"	1.00"
<b>C</b>	1.00"	0.96"	0.88"	1.10"
<b>D</b>	1.25"	0.38"	0.38"	0.38"

• All Spindle parts numbers noted above are based on Type W Spindle. Additional spindles manufactured to customer specifications.

• All AG hubs include grease zerk

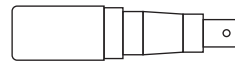
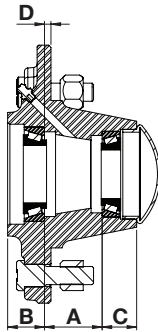
\*Non-stock items. Minimum order requirements and longer lead time will apply.

The specifications and dimensions above are for reference only.

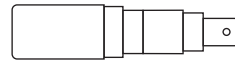


# AG Hubs - 5 Bolt

5.50" BOLT CIRCLE  
4.00" PILOT



Type W



Type X



Type Y



736  
Shown

HUB REFERENCE	20-5	736	511*	25-5	719
Capacity Rating	2000#	2000#	2000#	2500#	2760#
Wheel Offset	0.25" Negative	0.25" Negative	0.25" Negative	0.25" Negative	0.25" Negative
<b>Hub - Part #</b>	<b>AG-H2055550-2Z</b>	<b>AG-H7365550-2Z</b>	<b>AG-H5115550-1Z</b>	<b>AG-H2555550-2Z</b>	<b>AG-H7195550-2Z</b>
Inner Cup - Part #	LM-67010	LM-67010	LM-67010	LM-48510	LM-48510
Outer Cup - Part #	LM-11910	LM-11910	LM-11910	LM-67010	LM-67010
Wheel Stud - Part#	AG-WS1280Z	AG-WS1280Z	N/A	AG-WS1280Z	AG-WS1280Z
<b>Hub Assembly - Part #</b>	<b>AG-H2055550-2ZHA</b>	<b>AG-H7365550-2ZHA</b>	<b>AG-H5115550-1ZHA</b>	<b>AG-H2555550-2ZHA</b>	<b>AG-H7195550-2ZHA</b>
Hub - Part #	AG-H2055550-2Z	AG-H7365550-2Z	AG-H5115550-1Z	AG-H2555550-2Z	AG-H7195550-2Z
Inner Cone - Part #	LM-67048	LM-67048	LM-67048	LM-48548	LM-48548
Outer Cone - Part #	LM-11949	LM-11949	LM-11949	LM-67048	LM-67048
Dust Cap - Part #	AG-DC-195Z	AG-DC-195Z	AG-DC-195Z	AG-DC-244Z	AG-DC-244Z
Wheel Bolt - Part #	N/A	N/A	AG-WB1250Z	N/A	N/A
Wheel Nut - Part #	AG-WN1220Z	AG-WN1220Z	N/A	AG-WN1220Z	AG-WN1220Z
Grease Seal - Part #	AG-GS-23321625SL	AG-GS-23321500SL	AG-GS-23321500SL	AG-GS-27221750SL	AG-GS-26271500DL

## SPINDLE

Spindle - Part #	SP-205163-100	SP-736163-105	SP-736163-105	SP-255175-125	SP-719175-115
Spindle # (see pg. 10-11)	5	6	6	7	8
Nut - Part #	AG-FA-SN0625	AG-FA-SN0750	AG-FA-SN0750	AG-FA-SN0750	AG-FA-SN0875
Washer - Part #	AG-FA-SW0625	AG-FA-SW0750	AG-FA-SW0750	AG-FA-SW0750-H	AG-FA-SW0875
Cotter Pin - Part #	AG-FA-CP175	AG-FA-CP175	AG-FA-CP175	AG-FA-CP175	AG-FA-CP175
<b>Types Available</b>	<b>W,X,Y</b>	<b>W,X,Y</b>	<b>W,X,Y</b>	<b>W,X,Y</b>	<b>W,X,Y</b>

## HUB DIMENSION REFERENCE

	20-5	736	511*	25-5	719
<b>A</b>	2.00"	2.00"	2.00"	1.56"	1.56"
<b>B</b>	1.00"	1.00"	1.00"	1.03"	1.00"
<b>C</b>	0.94"	0.94"	0.94"	0.94"	1.06"
<b>D</b>	0.63"	0.62"	0.63"	0.19"	0.22"

• All Spindle parts numbers noted above are based on Type W Spindle. Additional spindles manufactured to customer specifications.

• All AG hubs include grease zerk

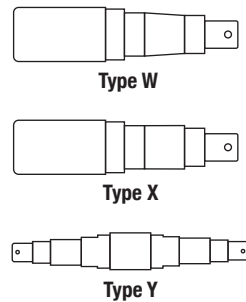
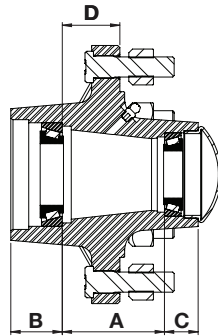
\*Non-stock items. Minimum order requirements and longer lead time will apply.

The specifications and dimensions above are for reference only.



# AG Hubs - 6 Bolt

6.00" BOLT CIRCLE  
4.62" PILOT



30-6  
Shown

HUB REFERENCE	30-6	35-6	35-6
Capacity Rating	3000#	3500#	3500#
Wheel Offset	1.12" Positive	1.12" Positive	1.12" Positive
<b>Hub - Part #</b>	<b>AG-H3066600-2Z</b>	<b>AG-H3566600-1Z</b>	<b>AG-H3566600-2Z</b>
Inner Cup - Part #	LM-29710	LM-501310	LM-501310
Outer Cup - Part #	LM-67010	LM-67010	LM-67010
Wheel Stud - Part#	AG-WS1280Z	N/A	AGOWS1400Z
<b>Hub Assembly - Part #</b>	<b>AG-H3066600-2ZHA</b>	<b>AG-H3566600-1ZHA</b>	<b>AG-H3566600-2ZHA</b>
Hub - Part #	AG-H3066600-2Z	AG-H3566600-1Z	AG-H3566600-2Z
Inner Cone - Part #	LM-29749	LM-501349	LM-501349
Outer Cone - Part #	LM-67048	LM-67048	LM-67048
Dust Cap - Part #	AG-DC-244Z	AG-DC-244Z	AG-DC-244Z
Wheel Bolt - Part #	N/A	AG-WB1125Z	N/A
Wheel Nut - Part #	AG-WN1220Z	N/A	AG-WN91618Z
Grease Seal - Part #	AG-GS-27221750SL	AG-GS-30662000SL	AG-GS-30662000SL

SPINDLE			
Spindle - Part #	SP-306175-120	SP-356200-130	SP-356200-130
Spindle # (see pg. 10-11)	9	10	11
Nut - Part #	AG-FA-SN0750	AG-FA-SN0750	AG-FA-SN0750
Washer - Part #	AG-FA-SW0875	AG-FA-SW0750-H	AG-FA-SW0750-H
Cotter Pin - Part #	AG-FA-CP175	AG-FA-CP175	AG-FA-CP175
<b>Types Available</b>	<b>W,X,Y</b>	<b>W,X,Y</b>	<b>W,X,Y</b>

HUB DIMENSION REFERENCE			
<b>A</b>	2.19"	2.84"	2.84"
<b>B</b>	1.00"	1.44"	1.44"
<b>C</b>	0.94"	0.97"	0.97"
<b>D</b>	1.94"	1.56"	1.56"

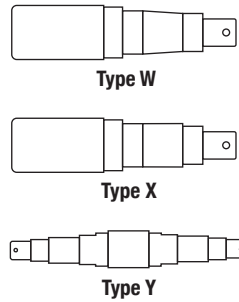
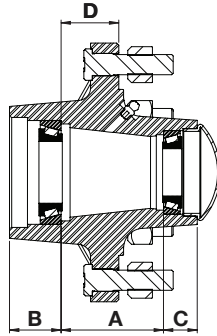
- All Spindle parts numbers noted above are based on Type W Spindle. Additional spindles manufactured to customer specifications.
  - All AG hubs include grease zerk
- \*Non-stock items. Minimum order requirements and longer lead time will apply.*

*The specifications and dimensions above are for reference only.*



# AG Hubs - 6 Bolt

6.00" BOLT CIRCLE  
4.62" PILOT



888  
Shown

HUB REFERENCE	888	888	611
Capacity Rating	3560#	3560#	3600#
Wheel Offset	1.12" Positive	1.12" Positive	1.12" Positive
<b>Hub - Part #</b>	<b>AG-H8886600-1Z</b>	<b>AG-H8886600-2Z</b>	<b>AG-H6116600-1Z</b>
Inner Cup - Part #	JL-69310	JL-69310	LM-29710
Outer Cup - Part #	LM-67010	LM-67010	LM-67010
Wheel Stud - Part#	N/A	AG-WS1280Z	N/A
<b>Hub Assembly - Part #</b>	<b>AG-H8886600-1ZHA</b>	<b>AG-H8886600-2ZHA</b>	<b>AG-H6116600-1ZHA</b>
Hub - Part #	AG-H8886600-1Z	AG-H8886600-1Z	AG-H6116600-1Z
Inner Cone - Part #	JL-69349	JL-69349	LM-29749
Outer Cone - Part #	LM-67048	LM-67048	LM-67048
Dust Cap - Part #	AG-DC-244Z	AG-DC-244Z	AG-DC-244Z
Wheel Bolt - Part #	AG-WB1250Z	N/A	AG-WB1250Z
Wheel Nut - Part #	N/A	AG-WN1220Z	N/A
Grease Seal - Part #	AG-GS-25661625SL	AG-GS-25661625SL	AG-GS-27221750SL

SPINDLE			
Spindle - Part #	SP-888175-105	SP-888200-125	SP-611175-140
Spindle # (see pg. 10-11)	11, 12, 12A	11, 12, 12A	13
Nut - Part #	AG-FA-SN0875	AG-FA-SN0875	AG-FA-SN1000
Washer - Part #	AG-FA-SW0875	AG-FA-SW0875	AG-FA-SW1000
Cotter Pin - Part #	AG-FA-CP175	AG-FA-CP175	AG-FA-CP205
<b>Types Available</b>	<b>W,X,Y</b>	<b>W,X,Y</b>	<b>W,X,Y</b>

HUB DIMENSION REFERENCE			
<b>A</b>	1.55"	1.55"	1.57"
<b>B</b>	1.06"	1.06"	1.06"
<b>C</b>	1.06"	1.06"	1.00"
<b>D</b>	1.50"	1.50"	1.62"
<b>Brake Bolt Pattern</b>	N/A	N/A	N/A

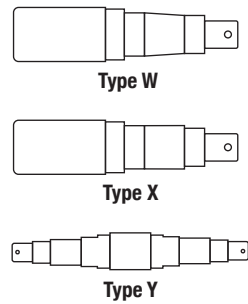
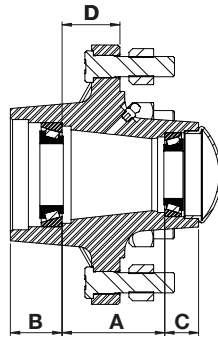
- All Spindle parts numbers noted above are based on Type W Spindle. Additional spindles manufactured to customer specifications.
- All AG hubs include grease zerk
- \*Non-stock items. Minimum order requirements and longer lead time will apply.

The specifications and dimensions above are for reference only.



# AG Hubs - 6 Bolt

6.00" BOLT CIRCLE  
4.62" PILOT



803  
Shown

HUB REFERENCE	803	660
Capacity Rating	4910#	3500#
Wheel Offset	1.12" Positive	1.12" Positive
<b>Hub - Part #</b>	<b>AG-H8036600-1Z</b>	<b>AG-H660-42-2</b>
Inner Cup - Part #	25520	25520
Outer Cup - Part #	25821	14276
Wheel Stud - Part#	N/A	AG-WS-2310
<b>Hub Assembly - Part #</b>	<b>AG-H8036600-1ZHA</b>	<b>AG-H660-42-2HA</b>
Hub - Part #	AG-H8036600-1Z	AG-H660-42-2
Inner Cone - Part #	25590	25580
Outer Cone - Part #	25877	14125A
Dust Cap - Part #	AG-DC-315Z	AG-DC-275
Wheel Bolt - Part #	AG-WB1125Z	N/A
Wheel Nut - Part #	N/A	AG-WN91618Z
Grease Seal - Part #	AG-GS-36282000SL	GS-2250DL

SPINDLE		
Spindle - Part #	SP-803213-155	SP-22542NW
Spindle # (see pg. 10-11)	16	26
Nut - Part #	AG-FA-SN0875	AG-FA-SN100R
Washer - Part #	AG-FA-SW0875-2	AG-FA-SW100R
Cotter Pin - Part #	AG-FA-CP175	AG-FA-CP213
<b>Types Available</b>	<b>W,X,Y</b>	<b>W,X,Y</b>

HUB DIMENSION REFERENCE		
<b>A</b>	2.50"	1.86"
<b>B</b>	1.38"	1.47"
<b>C</b>	1.13"	1.24"
<b>D</b>	1.75"	0.57"
<b>Brake Bolt Pattern</b>	N/A	N/A

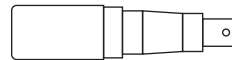
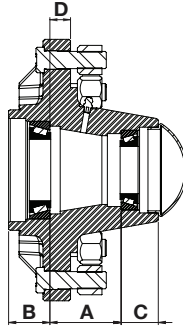
- All Spindle parts numbers noted above are based on Type W Spindle. Additional spindles manufactured to customer specifications.
- All AG hubs include grease zerk
- \*Non-stock items. Minimum order requirements and longer lead time will apply.

The specifications and dimensions above are for reference only.

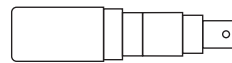


# AG Hubs - 8 Bolt

8.00" BOLT CIRCLE  
6.00" PILOT



Type W



Type X



Type Y



778  
Shown

HUB REFERENCE	45-8	778	813B	819B
Capacity Rating	4500#	4910#	4910#	5790#
Wheel Offset	1.12" Positive	1.50" Negative	1.50" Negative	1.50" Negative
<b>Hub - Part #</b>	<b>AG-H4588800-2Z</b>	<b>AG-H7788800-1Z</b>	<b>AG-H813B8800-2Z</b>	<b>AG-H819B8800-2Z</b>
Inner Cup - Part #	LM-603011	25520	25520	3720
Outer Cup - Part #	LM-67010	25821	25821	2720
Wheel Stud - Part#	AG-WS1625Z	N/A	AG-WS2310Z	AG-WS2310Z
<b>Hub Assembly - Part #</b>	<b>AG-H4588800-2ZHA</b>	<b>AG-H7788800-1ZHA</b>	<b>AG-H813B8800-2ZHA</b>	<b>AG-H819B8800-2ZHA</b>
Hub - Part #	AG-H4588800-2Z	AG-H7788800-1Z	AG-H813B8800-2Z	AG-H819B8800-2Z
Inner Cone - Part #	LM-603049	25590	25590	3780
Outer Cone - Part #	LM-67048	25877	25877	2790
Dust Cap - Part #	AG-DC-244Z	AG-DC-315Z	AG-DC-315Z	AG-DC-315Z
Wheel Bolt - Part #	N/A	AG-WB1125Z	N/A	N/A
Wheel Nut - Part #	AG-WN5818Z	N/A	AG-WN91618Z	AG-WN91618Z
Grease Seal - Part #	AG-GS-30662250SL	AG-GS-36282000SL	AG-GS-36282000SL	AG-GS-37562500SL

SPINDLE				
<b>Spindle - Part #</b>	<b>SP-458225-140</b>	<b>SP-778213-155</b>	<b>SP-778213-155</b>	<b>SP-819275-145</b>
Spindle # (see pg. 10-11)	17	18	18	19
Nut - Part #	AG-FA-SN0750	AG-FA-SN0875	AG-FA-SN0875	AG-FA-SN0875
Washer - Part #	AG-FA-SW0750-H	AG-FA-SW0875-2	AG-FA-SW0875-2	AG-FA-SW0875-2
Cotter Pin - Part #	AG-FA-CP175	AG-FA-CP175	AG-FA-CP175	AG-FA-CP175
<b>Types Available</b>	<b>W,X,Y</b>	<b>W,X,Y</b>	<b>W,X,Y</b>	<b>W,X,Y</b>

HUB DIMENSION REFERENCE				
<b>A</b>	2.83"	2.50"	2.50"	2.44"
<b>B</b>	1.26"	1.75"	1.75"	2.41"
<b>C</b>	0.97"	1.12"	1.12"	1.25"
<b>D</b>	1.38"	0.88"	0.88"	1.25"
<b>Brake Bolt Pattern</b>	N/A	N/A	8-8.0" / 5.75" Pilot	8-8.0" / 5.75" Pilot

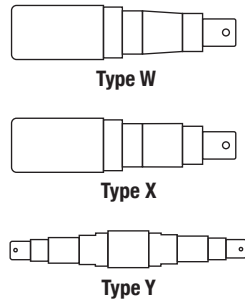
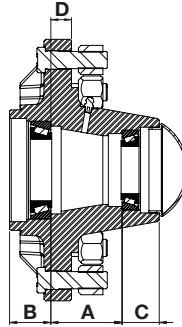
- All Spindle parts numbers noted above are based on Type W Spindle. Additional spindles manufactured to customer specifications.
- All AG hubs include grease zerk
- \*Non-stock items. Minimum order requirements and longer lead time will apply.

The specifications and dimensions above are for reference only.



# AG Hubs - 8 Bolt

8.00" BOLT CIRCLE  
6.00" PILOT



75-8B  
Shown

HUB REFERENCE	821	60-8B	75-8B	80-8B
Capacity Rating	5790#	6000#	7500#	8000#
Wheel Offset	1.50" Negative	0.38" Positive	0.38" Negative	0.38" Positive
<b>Hub - Part #</b>	<b>AG-H8218800-1Z</b>	<b>AG-H608B8800-2Z</b>	<b>AG-H758B8800-2Z</b>	<b>AG-H808B8800-2Z</b>
Inner Cup - Part #	3720	JLM-506810	382A	JLM-506810
Outer Cup - Part #	2720	LM-501310	LM-501310	LM-501310
Wheel Stud - Part#	N/A	AG-WS1625Z	AG-WS1625Z	AG-WS1500Z
<b>Hub Assembly - Part #</b>	<b>AG-H8218800-1ZHA</b>	<b>AG-H608B8800-2ZHA</b>	<b>AG-H758B8800-2ZHA</b>	<b>AG-H808B8800-2ZHA</b>
Hub - Part #	AG-H8218800-1Z	AG-H608B8800-2Z	AG-H758B8800-2Z	AG-H808B8800-2Z
Inner Cone - Part #	3780	JLM-506849	387AS	JLM-506849
Outer Cone - Part #	2790	LM-501349	LM-501349	LM-501349
Dust Cap - Part #	AG-DC-315Z	AG-DC-313Z	AG-DC-313Z	AG-DC-313Z
Wheel Bolt - Part #	AG-WB1500Z	N/A	N/A	N/A
Wheel Nut - Part #	N/A	AG-WN5818Z	AG-WN5818Z	AG-WN5818Z
Grease Seal - Part #	AG-GS-37562500SL	AG-GS-37562750SL	AG-GS-40083000SL	AG-GS-37562750SL

SPINDLE				
Spindle - Part #	SP-819275-145	SP-608275-140	SP-758300-160	SP-808300-160
Spindle # (see pg. 10-11)	19	20	21	22
Nut - Part #	AG-FA-SN0875	AG-FA-SN1000	AG-FA-SN1000	AG-FA-SN1000
Washer - Part #	AG-FA-SW0875-2	AG-FA-SW1055-H	AG-FA-SW1055-H	AG-FA-SW1055-H
Cotter Pin - Part #	AG-FA-CP175	AG-FA-CP205	AG-FA-CP205	AG-FA-CP205
<b>Types Available</b>	<b>W,X,Y</b>	<b>W,X,Y</b>	<b>W,X,Y</b>	<b>W,X,Y</b>

HUB DIMENSION REFERENCE				
<b>A</b>	2.44"	2.56"	3.77"	2.72"
<b>B</b>	2.41"	1.50"	1.52"	1.50"
<b>C</b>	1.25"	1.37"	1.39"	1.37"
<b>D</b>	1.34"	0.75"	1.66"	0.86"
<b>Brake Bolt Pattern</b>	N/A	8-5.5" / 4.375" Pilot	8-5.5" / 4.50" Pilot	8-5.5" / 4.375" Pilot

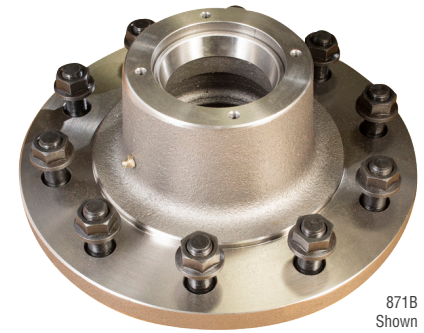
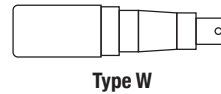
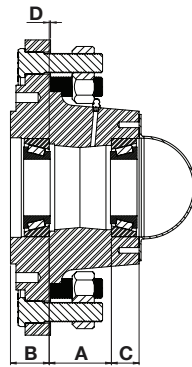
- All Spindle parts numbers noted above are based on Type W Spindle. Additional spindles manufactured to customer specifications.
- All AG hubs include grease zerk
- \*Non-stock items. Minimum order requirements and longer lead time will apply.

The specifications and dimensions above are for reference only.



# AG Hubs - 10 Bolt

11.25" BOLT CIRCLE  
8.69" PILOT



HUB REFERENCE	871B	873B
Capacity Rating	12,000#	15,000#
Wheel Offset	0.00"	0.00"
<b>Hub - Part #</b>	<b>AG-H871B101125-2Z</b>	<b>AG-H873B101125-2Z</b>
Inner Cup - Part #	39520	33462
Outer Cup - Part #	453A	453A
Wheel Stud - Part #	AG-WS1813Z	AG-WS1813Z
<b>Hub Assembly - Part #</b>	<b>AG-H871B101125-2ZHA</b>	<b>AG-H873B101125-2ZHA</b>
Hub - Part #	AG-H871B101125-2Z	AG-H873B101125-2Z
Inner Cone - Part #	39585	33275
Outer Cone - Part #	460	460
Dust Cap - Part #	AG-DC-575Z*** (W/SCREWS)	AG-DC-575Z*** (W/SCREWS)
Wheel Bolt - Part #	N/A	N/A
Wheel Nut - Part #	AG-WNF3416Z	AG-WNF3416Z
Grease Seal - Part #	AG-GS-45053000SL	AG-GS-46313375SL

SPINDLE		
<b>Spindle - Part #</b>	<b>SP-871313-175</b>	<b>SP-873338-175</b>
Spindle # (see pg. 10-11)	23	24, 24A
Nut - Part #	AG-FA-SN1250	AG-FA-SN1250
Washer - Part #	AG-FA-SW1375	AG-FA-SW1375
Cotter Pin - Part #	AG-FA-CP200	AG-FA-CP200
<b>Types Available</b>	<b>W</b>	<b>W</b>

HUB DIMENSION REFERENCE		
<b>A</b>	2.81"	2.81"
<b>B</b>	1.75"	1.75"
<b>C</b>	1.25"	1.25"
<b>D</b>	0.06"	0.06"
<b>Brake Bolt Pattern</b>	6-8.25"	6-8.25"

• All Spindle parts numbers noted above are based on Type W Spindle. Additional spindles manufactured to customer specifications.

• All AG hubs include grease zerk

\*\*\*When ordering the compete assembly, the dust cap includes 4 each AG-FA-DC516 dust cap screws.

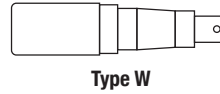
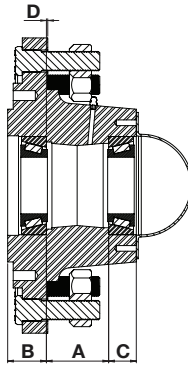
\*Non-stock items. Minimum order requirements and longer lead time will apply.

The specifications and dimensions above are for reference only.



# AG Hubs - 10 Bolt

13.19" BOLT CIRCLE  
11.007" PILOT



881  
Shown

HUB REFERENCE	881	882*	981*
Capacity Rating	20,000#	22,500#	25,000#
Wheel Offset	1.50" Positive	1.50" Positive	1.50" Positive
<b>Hub - Part #</b>	<b>AG-H881101319-2Z</b>	<b>AG-H882101319-2Z</b>	<b>AG-H981101319-2Z</b>
Inner Cup - Part #	HM-218210	HM-218210	HM-218210
Outer Cup - Part #	HM-212011	HM-212011	HM-212011
Wheel Stud - Part#	AG-WS1813Z	AG-WS1813Z	AG-WS1813Z
<b>Hub Assembly - Part #</b>	<b>AG-H881101319-2ZHA</b>	<b>AG-H882101319-2ZHA</b>	<b>AG-H981101319-2ZHA</b>
Hub - Part #	AG-H881101319-2Z	AG-H882101319-2Z	AG-H981101319-2Z
Inner Cone - Part #	HM-218248	HM-218248	HM-218248
Outer Cone - Part #	HM-212049	HM-212049	HM-212049
Dust Cap - Part #	AG-DC-613Z* (W/SCREWS)	AG-DC-613Z* (W/SCREWS)	AG-DC-613Z* (W/SCREWS)
Wheel Bolt - Part #	N/A	N/A	N/A
Wheel Nut - Part #	AG-WNF3416Z	AG-WNF3416Z	AG-WNF3416Z
Grease Seal - Part #	AG-GS-60074375SL	AG-GS-60074375SL	AG-GS-60074375SL

SPINDLE			
Spindle - Part #	SP-881450-265	SP-881450-265	SP-881450-265
Spindle # (see pg. 10-11)	25	25	25
Nut - Part #	AG-FA-SN2000	AG-FA-SN2000	AG-FA-SN2000
Washer - Part #	AG-FA-SW2125	AG-FA-SW2125	AG-FA-SW2125
Cotter Pin - Part #	AG-FA-CP350	AG-FA-CP350	AG-FA-CP350
<b>Types Available</b>	<b>W</b>	<b>W</b>	<b>W</b>

HUB DIMENSION REFERENCE			
<b>A</b>	3.25"	3.25"	3.25"
<b>B</b>	2.28"	2.28"	2.28"
<b>C</b>	1.72"	1.72"	1.72"
<b>D</b>	1.66"	1.66"	1.66"
<b>Brake Bolt Pattern</b>	N/A	N/A	N/A

• All Spindle parts numbers noted above are based on Type W Spindle. Additional spindles manufactured to customer specifications.

• All AG hubs include grease zerk

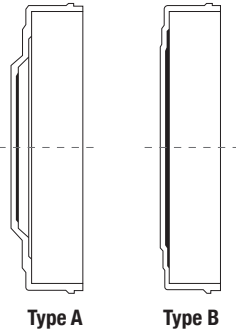
\*\*\*When ordering the complete assembly, the dust cap includes 4 each AG-FA-DC516 dust cap screws.

\*Non-stock items. Minimum order requirements and longer lead time will apply.

The specifications and dimensions above are for reference only.

# AG Brake Drums

TYPE A / TYPE B



DRUM REFERENCE	DRUM SIZE	TYPE	BOLT CIRCLE	BOLT HOLE DIAMETER	PILOT	WEIGHT
AG-D13-6554375*	13"	A	6-5.5"	0.531"	4.375"	24#
AG-D13-8554375	13"	A	8-5.5"	0.531"	4.375"	24#
AG-D13-8554500	13"	A	8-5.5"	0.531"	4.500"	24#
AG-D13-8805750	13"	B	8-8.0"	0.625"	5.750"	22#

# AG-D138805750

• AG hub capacities are based on tractor speeds up to 20 mph and using recommended wheel offset.

\*Non-stock items. Minimum order requirements and longer lead time will apply.

The specifications and dimensions above are for reference only.

AGRICULTURE

HUB REFERENCE  
H = HUB  
D = DRUM

DRUM  
DIAMETER

8 BOLT ON  
8.0" BOLT  
CIRCLE

5.750"  
PILOT  
DIAMETER

# AG Hydraulic Brakes



13" x 2-1/2"  
Free Backing  
Shown



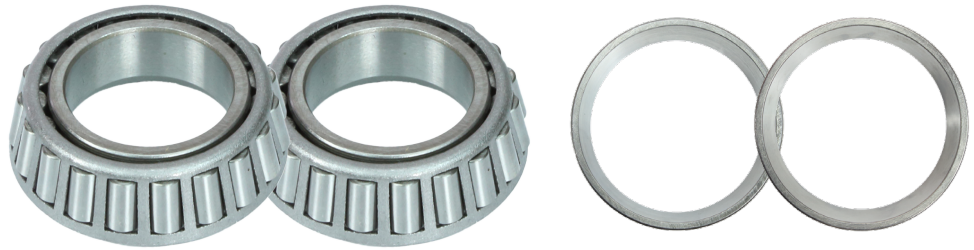
12" x 2"  
Uni-Servo  
Shown

PART NUMBER	DESCRIPTION	FLANGE BOLT
AG-BK-13HFB-RH	Hydraulic Brake, 13" x 2-1/2" Free Backing, E-Coat, RH	4
AG-BK-13HFB-LH	Hydraulic Brake, 13" x 2-1/2" Free Backing, E-Coat, LH	4
BK-23510	Hydraulic Brake, 12" x 2" Uni-Servo, E-Coat, RH	5
BK-23511	Hydraulic Brake, 12" x 2" Uni-Servo, E-Coat, LH	5
BK-42028	Hydraulic Brake, 12" x 2" Free Backing, E-Coat, RH	5
BK-42029	Hydraulic Brake, 12" x 2" Free Backing, E-Coat, LH	5
BK-42028X	Hydraulic Brake, 12" x 2" Free Backing, Dacromet, RH	5
BK-42029X	Hydraulic Brake, 12" x 2" Free Backing, Dacromet, LH	5

\*Brake flanges are customized to your requirements. \*Non-stock items. Minimum order requirements and longer lead time will apply.

• AG hub capacities are based on tractor speeds up to 20 mph and using recommended wheel offset. The specifications and dimensions above are for reference only.

# Tapered Roller Bearings



PART NUMBER	DESCRIPTION	CONE ID	CUP OD	BOX QUANTITY	BOX WEIGHT	CASE QUANTITY	CASE WEIGHT
L-44643	Cone	1.0000"	–	297 pc.	59 lb.	10,692 pc.	2,124 lb.
L-44610	Cup	–	1.9800"	297 pc.	27 lb.	10,692 pc.	972 lb.
LM-67048	Cone	1.2500"	-	184 pc.	49 lb.	6,624 pc.	1,764 lb.
LM-67101	Cup	–	2.3280"	184 pc.	25 lb.	6,624 pc.	900 lb.
25590	Cone	1.7960"	–	60 pc.	45 lb.	2,160 pc.	1,630 lb.
25520	Cup	–	3.2650"	55 pc.	26 lb.	1,980 pc.	936 lb.
LM-11949	Cone	0.7500"	–	360 pc.	65 lb.	12,960 pc.	2,365 lb.
LM-11910	Cup	–	1.7810"	360 pc.	36 lb.	12,960 pc.	1,320 lb.
LM-48548	Cone	1.3750"	–	128 pc.	53 lb.	4,608 pc.	1,908 lb.
LM-48510	Cup	–	2.5625"	192 pc.	38 lb.	6,912 pc.	1,368 lb.
LM-501349	Cone	1.6250"	–	130 pc.	60 lb.	4,680 pc.	2,160 lb.
LM-501310	Cup	–	2.8910"	150 pc.	39 lb.	5,400 pc.	1,404 lb.
JL-69349	Cone	1.4961"	-	175 pc.	53 lb.	6,300 pc.	1,908 lb.
JL-69310	Cup	–	2.4803"	192 pc.	32 lb.	6,912 pc.	1,152 lb.
33275	Cone	2.7500"	–	–	–	–	–
33462	Cup	–	4.6250"	–	–	–	–
HM-218248	Cone	3.5423"	–	10 pc.	40 lb.	360 pc.	1,440 lb.
HM-218210	Cup	–	5.7864"	10 pc.	20 lb.	360 pc.	720 lb.
HM-212049	Cone	2.6250"	–	14 pc.	45 lb.	504 pc.	1,620 lb.
HM-212011	Cup	–	4.8125"	24 pc.	34 lb.	864 pc.	1,224 lb.
LM-29749	Cone	1.5000"	–	120 pc.	42 lb.	4,320 pc.	1,520 lb.
LM-29710	Cup	–	2.5625"	256 pc.	44 lb.	9,216 pc.	1,602 lb.
LM-603049	Cone	1.7812"	–	84 pc.	46 lb.	3,024 pc.	1,656 lb.
LM-603011	Cup	–	3.0625"	192 pc.	50 lb.	6,912 pc.	1,808 lb.
25877	Cone	1.3750"	–	84 pc.	57 lb.	3,024 pc.	2,052 lb.
25821	Cup	–	2.8750"	168 pc.	62 lb.	6,048 pc.	2,232 lb.
3780	Cone	2.0000"	–	45 pc.	56 lb.	1,620 pc.	2,016 lb.
3720	Cup	–	3.6718"	96 pc.	62 lb.	3,456 pc.	2,232 lb.
2790	Cone	1.3125"	–	84 pc.	59 lb.	3,024 pc.	2,130 lb.
2720	Cup	–	3.0000"	168 pc.	69 lb.	6,048 pc.	2,486 lb.
387AS	Cone	2.2500"	–	84 pc.	77 lb.	3,024 pc.	2,794 lb.
382A	Cup	–	3.8125"	144 pc.	57 lb.	5,184 pc.	2,052 lb.
39585	Cone	2.5000"	–	14 pc.	28 lb.	504 pc.	1,008 lb.
39520	Cup	–	4.4375"	40 pc.	32 lb.	1,440 pc.	2,520 lb.
JLM-506849	Cone	2.1654"	–	84 pc.	70 lb.	3,024 pc.	2,520 lb.
JLM-506810	Cup	–	3.5433"	144 pc.	59 lb.	5,184 pc.	2,124 lb.
460	Cone	1.7500"	–	32 pc.	65 lb.	1,152 pc.	2,350 lb.
453	Cup	–	4.2500"	72 pc.	66 lb.	2,592 pc.	2,400 lb.
14125A	Cone	1.2500"	–	108 pc.	40 lb.	3,888 pc.	1,440 lb.
14276	Cup	–	2.7170"	108 pc.	19 lb.	3,888 pc.	684 lb.

• Other tapered roller bearings available upon request. *The specifications and dimensions above are for reference only.*

## AG Grease Seals



PART NUMBER	SHAFT DIAMETER	BORE DIAMETER	SEAL OD.	SEAL WIDTH	REF. NUMBER	BOX QUANTITY	BOX WEIGHT
AG-GS-19871250SL	1.250"	1.983"	1.987"	0.250"	12437	300 pc.	16 lb.
AG-GS-23321500SL	1.500"	2.328"	2.332"	0.390"	14975	300 pc.	16 lb.
AG-GS-26271500DL	1.500"	2.623"	2.627"	0.250"	15190	300 pc.	19 lb.
AG-GS-23321625SL	1.625"	2.328"	2.332"	0.438"	16069	300 pc.	18 lb.
AG-GS-25661625SL	1.625"	2.562"	2.566"	0.438"	16289	300 pc.	23 lb.
AG-GS-27221750SL	1.750"	2.718"	2.722"	0.359"	17617	300 pc.	23 lb.
AG-GS-30051875SL	1.875"	3.000"	3.005"	0.250"	18823	300 pc.	31 lb.
AG-GS-30662000SL	2.000"	3.061"	3.066"	0.250"	20044	300 pc.	25 lb.
AG-GS-36282000SL	2.000"	3.623"	3.628"	0.250"	20148	300 pc.	25 lb.
AG-GS-30052250SL	2.250"	3.000"	3.005"	0.250"	22368	300 pc.	25 lb.
AG-GS-30662250SL	2.250"	3.061"	3.066"	0.250"	22392	300 pc.	34 lb.
AG-GS-37562500SL	2.500"	3.751"	3.756"	0.438"	25091	300 pc.	34 lb.
AG-GS-37562750SL	2.750"	3.751"	3.756"	0.250"	27394	200 pc.	34 lb.
AG-GS-40083000SL	3.000"	4.003"	4.008"	0.250"	29968	200 pc.	34 lb.
AG-GS-45053000SL	3.000"	4.500"	4.505"	0.438"	30087	150 pc.	31 lb.
AG-GS-46313375SL	3.375"	4.626"	4.631"	0.438"	33772	150 pc.	31 lb.
AG-GS-60074375SL	4.375"	6.001"	6.007"	0.500"	43771	70 pc.	36 lb.
AG-GS-2250DL	2.250"	3.371"	3.376"	0.375"	22333TB	300 pc.	31 lb.

• Material: Rubber= Nitrile Buna - 70 durometer compound

\*Non-stock items. Minimum order requirements and longer lead time will apply. Double or Triple Lip are special order.

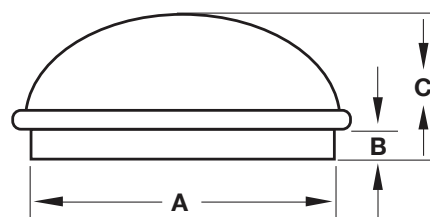
The specifications and dimensions above are for reference only.



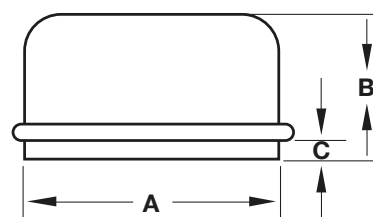
# AG Dust Caps

PART NUMBER	HUBS USING DUST CAP	DIMENSIONS			TYPE	BOX QUANTITY	BOX WEIGHT
		A	B	C			
AG-DC-195Z	12-4, 669, 20-5, 736, 511, 20-6	1.95"	1.38"	0.34"	A	1,000 pc.	88 lb.
AG-DC-196ALTZ	633 (Same as part AG-DC-2030Z)	1.96"	0.95"	0.33"	C	1,000 pc.	85 lb.
AG-DC-198Z*	10-4	1.99"	0.95"	0.37"	B	1,000 pc.	80 lb.
AG-DC-244Z	25-5, 719, 25-6, 30-6, 35-6, 888, 611, 887, 783, 45-8, 890	2.44"	1.25"	0.31"	A	500 pc.	89 lb.
AG-DC-275Z	660	2.72"	1.28"	0.33"	C	430 pc.	69 lb.
AG-DC-313Z	60-8, 75-8, 80-8	3.13"	1.31"	0.31"	C	250 pc.	75 lb.
AG-DC-315Z	803, 778, 819, 821	3.16"	1.38"	0.30"	C	250 pc.	78 lb.
AG-DC-575Z***	871, 873	5.00"	1.75"	3.69"	D	100 pc.	195 lb.
AG-DC-613Z***	881, 882, 981	5.75"	2.25"	4.50"	D	100 pc.	100 lb.

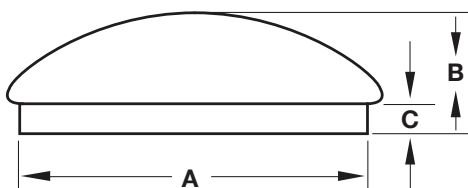
PART NUMBER	DESCRIPTION
AG-FA-DC516***	Dust Cap Screw, 5/16" - 18" x 1/2" Grade 5 (May be used with AG-DC-575Z & AG-DC-613Z)



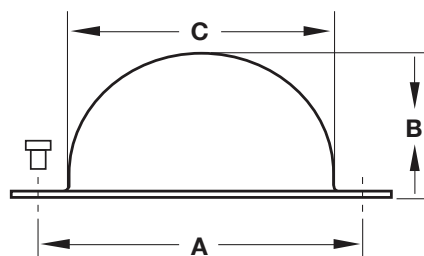
Type A



Type B



Type C



Type D

• Material: Zinc-coated steel material thickness 16 gauge, except for AG-DC-198Z which is 22 gauge.

\*Non-stock items. Minimum order requirements and longer lead time will apply.

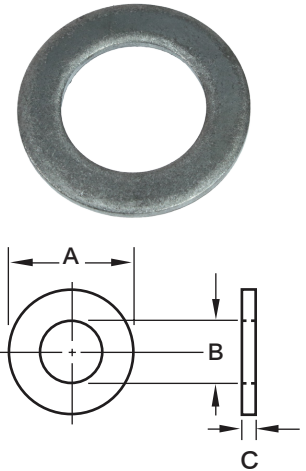
\*\*\*When ordering the complete Assembly, the dust cap includes 4 each AG-FA-DC516 dust cap screws. If ordering AG-DC-575Z or AG-DC-613Z does not include the AG-FA-DC516 screw, must order 4 per dust cap.

The specifications and dimensions above are for reference only.

# Spindle Fasteners

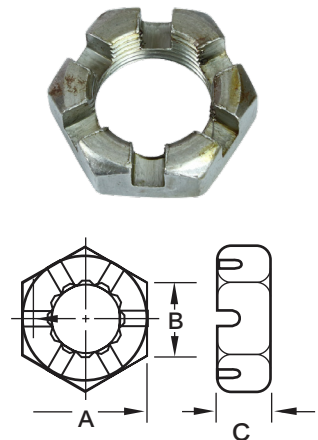
## Flat Round Spindle Washers

PART NUMBER	DIMENSIONS			BOX QUANTITY	BOX WEIGHT
	A	B	C		
AG-FA-SW0750	1.47"	0.812"	0.134"	1,120 pc.	46 lb.
AG-FA-SW100R	1.67"	1.000"	0.130"	1,000 pc.	35 lb.
AG-FA-SW0625	1.75"	0.688"	0.134"	650 pc.	45 lb.
AG-FA-SW0875	1.75"	0.938"	0.134"	800 pc.	53 lb.
AG-FA-SW0750-H	2.00"	0.812"	0.148"	500 pc.	46 lb.
AG-FA-SW1000	2.00"	1.062"	0.134"	550 pc.	40 lb.
AG-FA-SW0875-2	2.25"	0.875"	0.165"	350 pc.	50 lb.
AG-FA-SW1055-H	2.50"	1.055"	0.185"	100 pc.	48 lb.
AG-FA-SW1375	3.00"	1.375"	0.165"	100 pc.	23 lb.
AG-FA-SW2125	3.75"	2.125"	0.185"	100 pc.	59 lb.



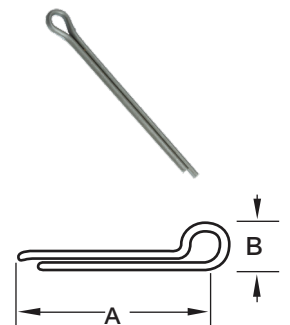
## Spindle Nuts

PART NUMBER	THREAD	DIMENSIONS			BOX QUANTITY	BOX WEIGHT
		A	B	C		
AG-FA-SN0625	5/8" - 18"	0.93"	0.63"	0.54"	800 pc.	44 lb.
AG-FA-SN0750	3/4" - 16"	1.11"	0.75"	0.64"	500 pc.	52 lb.
AG-FA-SN0875	7/8" - 14"	1.29"	0.88"	0.75"	300 pc.	47 lb.
AG-FA-SN100R	1" - 14"	1.46"	1.00"	0.55"	300 pc.	42 lb.
AG-FA-SN1000	1" - 14"	1.50"	1.00"	0.83"	200 pc.	49 lb.
AG-FA-SN1250	1-1/4" - 12"	1.85"	1.25"	1.06"	100 pc.	48 lb.
AG-FA-SN2000	2" - 12"	2.90"	2.00"	1.25"	25 pc.	48 lb.



## Cotter Pins

PART NUMBER	SIZE	DIMENSIONS		BOX QUANTITY	BOX WEIGHT
		A	B		
AG-FA-CP75	5/32"	1.750"	0.31"	1,000 pc.	11 lb.
AG-FA-CP205	7/32"	2.000"	0.44"	250 pc.	8 lb.
AG-FA-CP200	1/4"	2.000"	0.50"	1,000 pc.	16 lb.
AG-FA-CP213	1/8"	2.125"	0.25"	2,000 pc.	12 lb.
AG-FA-CP350	5/16"	3.500"	0.62"	1,000 pc.	20 lb.



The specifications and dimensions above are for reference only.

# Fasteners

## Wheel Bolts

PART NUMBER	DESCRIPTION	DIMENSIONS
AG-W81000Z	Wheel Bolt, Hex Head, 90 Degrees	1.50" x 1/2" - 20
AG-WB1500Z	Wheel Bolt, Hex Head, 90 Degrees	1.50" x 9/16" - 18
AG-WB1125Z	Wheel Bolt, Hex Head, 90 Degrees	1.63" x 9/16" - 18
AG-WB1250Z	Wheel Bolt, Hex Head, 90 Degrees	1.75" x 1/2" - 20



## Wheel Studs

PART NUMBER	DESCRIPTION	DIMENSIONS
AG-WS1750Z	Wheel Stud, GR8, Zinc	1.75" x 9/16" - 18
AG-WS1813Z	Wheel Stud, GR8, Zinc	1.81" x 3/4" - 16
AG-WS1280Z	Wheel Stud, GR8, Zinc	2.06" x 1/2" - 20
FA-WS-2310	Wheel Stud, GR8, Zinc	2.31" x 9/16" - 18
AG-WS1400Z	Wheel Stud, GR8, Zinc	2.46" x 9/16" - 18
AG-WS1625Z	Wheel Stud, GR8, Zinc	2.53" x 5/8" - 18



## Wheel Nuts

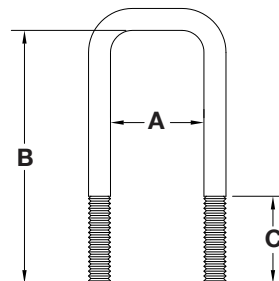
PART NUMBER	DESCRIPTION	DIMENSIONS
AG-WN1220Z	Wheel Nut, 90 Degrees GR5, Zinc	1/2" - 20
AG-WN91618Z	Wheel Nut, 90 Degrees GR5, Zinc	9/16" - 18
AG-WNF5818Z*	Wheel Nut Flanged GR5, Zinc	5/8" - 18
FA-6-109	Wheel Nut, 90 Degrees GR5, Zinc	5/8" - 16



\*Non-stock items. Minimum order requirements and longer lead time will apply.  
The specifications and dimensions above are for reference only.

# U-Bolts

Custom U-Bolts are available upon request. Contact your TRP Account Executive with dimensions A, B and C. Specify course or fine thread size, plain, white zinc or yellow zinc.



# Trailer Frame Jacks

## A-Frame Jacks

PART NUMBER	LIFT CAP.	TRAVEL	R	E	DESCRIPTION	UNIT WT.	CASE QTY.	CASE WT.	REF. #
TR-JTW2K-14	2,000 lb.	14"	19"	33"	Drop Through Bolt-On or Weld-On, Black	7.70 lb.	220 pc.	1,738 lb.	TJA-2000-B
TR-JTW5K-15	5,000 lb.	15"	19"	34"	Drop Through Bolt-On or Weld-On, Black	10.17 lb.	220 pc.	2,237 lb.	TJA-5000-B



## Swivel, Weld-On Jacks

PART NUMBER	LIFT CAP.	TRAVEL	R	E	DESCRIPTION	UNIT WT.	CASE QTY.	CASE WT.	REF. #
TR-JTWR2K-10	2,000 lb.	10"	11"	21"	Top Wind Swivel, Retaining Ring Mount, Black	11.50 lb.	150 pc.	1,642 lb.	TJB-2001-B
TR-JTWR2K-15	2,000 lb.	15"	11"	26"	Top Wind Swivel, Retaining Ring Mount, Black	13.50 lb.	120 pc.	1,663 lb.	TJB-2002-B
TR-JSWR2K-10	2,000 lb.	10"	11"	21"	Side Wind Swivel, Retaining Ring Mount, Black	14.30 lb.	150 pc.	2,185 lb.	TJB-2001S-B
TR-JSWR2K-15	2,000 lb.	15"	11"	26"	Side Wind Swivel, Retaining Ring Mount, Black	16.50 lb.	120 pc.	2,025 lb.	TJB-2002S-B



## Swivel, Tube Mount Jacks

PART NUMBER	LIFT CAP.	TRAVEL	R	E	DESCRIPTION	UNIT WT.	CASE QTY.	CASE WT.	REF. #
TR-JTWT2K-10	2,000 lb.	10"	11"	21"	Top Wind Swivel, Tube Mount, Black	10.30 lb.	150 pc.	1,585 lb.	TJP-2001-B
TR-JTWT2K-15	2,000 lb.	15"	11"	26"	Top Wind Swivel, Tube Mount, Black	12.10 lb.	150 pc.	1,855 lb.	TJP-2002-B
TR-JTWT5K-10	5,000 lb.	10"	11"	21"	Top Wind Swivel, Tube Mount, Black	11.50 lb.	150 pc.	1,765 lb.	TJP-5001-B
TR-JTWT5K-15	5,000 lb.	15"	11"	26"	Top Wind Swivel, Tube Mount, Black	13.50 lb.	150 pc.	2,065 lb.	TJP-5002-B



## Direct Weld, Light-Duty Jacks

PART NUMBER	LIFT CAP.	TRAVEL	R	E	DESCRIPTION	UNIT WT.	CASE QTY.	CASE WT.	REF. #
TR-JTWD7K-15	7,000 lb.	15"	22.50"	37.50"	Top Wind w/Drop-Leg, Square, Black	21.30 lb.	100 pc.	2,170 lb.	TJD-7000
TR-JSWD7K-15	7,000 lb.	15"	24.75"	39.75"	Side Wind w/Drop-Leg, Square, Black	23.30 lb.	100 pc.	2,370 lb.	TJD-7000-S



The specifications and dimensions above are for reference only.

# Trailer Frame Jacks

## Direct Weld, Medium-Duty Jacks

PART NUMBER	LIFT CAP.	TRAVEL	R	E	DESCRIPTION	UNIT WT.	CASE QTY.	CASE WT.	REF. #
TR-JSWD12K-FP	12,000 lb.	12.50" - 26"	28.25"	41.75" - 54.25"	Side Wind w/Front Pull Pin, Crank Handle w/Spring Return, Square, Black	64 lb.	30 pc.	1,960 lb.	TJD-12000SP-F2
TR-JSWD12K-SP	12,000 lb.	12.50" - 26"	28.25"	41.75" - 54.25"	Side Wind w/Side Pull Pin, Crank Handle w/Spring Return, Square, Black	64 lb.	30 pc.	1,960 lb.	TJD-12000SP-R2



## Direct Weld, Two-Speed Medium-Duty Jack

PART NUMBER	LIFT CAP.	TRAVEL	R	E	DESCRIPTION	UNIT WT.	CASE QTY.	CASE WT.	REF. #
TR-JSWD2S12K-FP	12,000 lb.	12.50" - 26"	29"	41.75" - 55"	Two Speed Side Wind w/ Front Pull Pin, Crank Handle w/Spring Return, Black	70 lb.	25 pc.	2,140 lb.	TJD2SP-12900SP-F



## Electric Jack

PART NUMBER	LIFT CAP.	TRAVEL	R	E	DESCRIPTION	UNIT WT.	CASE QTY.	CASE WT.	REF. #
TR-JE3.5K-24	3,500 lb.	19.5"	9"	28.5"	12V DC Powered w/Manual Override Crank Drop Through Bolt-On or Weld-On, Black	20.3 lb.	36 pc.	818 lb.	EJ-3520



## Side Wind Marine Jacks

PART NUMBER	LIFT CAP.	TRAVEL	R	E	DESCRIPTION	UNIT WT.	CASE QTY.	CASE WT.	REF. #
TR-JSWWM1K-10	1,000 lb.	10"	12.5"	22.50"	Side Wind Swivel, Weld-On, w/6" Caster	13.20 lb.	150 pc.	2,020 lb.	MJ-1000W
TR-JSWBM1.2K-10	1,200 lb.	11"	12.25"	23.25"	Side Wind Swivel, Bolt-On, w/6" Caster	14.70 lb.	120 pc.	1,801 lb.	MJ-1206B
TR-JSWBM1.5K-10	1,500 lb.	10"	13"	23"	Side Wind Swivel, Bolt-On, w/8" Caster	19.10 lb.	100 pc.	1,950 lb.	MJ-1500B
TR-JSWBMD1.5K-10	1,500 lb.	10"	12"	22"	Side Wind Swivel, Bolt-On, w/6" Dual Caster	19.60 lb.	90 pc.	1,804 lb.	MJ-1500B-DWL
TR-JSWFBM2.5K-28	2,500 lb.	15"-28.5"	7.25"	22.25" - 35.75"	Square Side Wind Fixed, Bolt-On, w/jack Ft	25.70 lb.	100 pc.	2,610 lb.	MJSQ-2500B



• Zinc Plated. The specifications and dimensions above are for reference only.

# Cast-Head Couplers

## A-Frame



PART NUMBER	BALL SIZE	TONGUE TYPE	SAE CLASS	CAPACITY	FINISH	UNIT WT.	CASE QTY.	CASE WT.	REF. #
TR-CAC7K-2.00	2"	A-Frame	4	7,000 lb.	Black	14 lb.	150 pc.	2,140 lb.	CA-5196-B
TR-CAC12.5K-2.31	2-15/16"	A-Frame	4	12,500 lb.	Black	18 lb.	125 pc.	2,290 lb.	CA-5296-B

## Adjustable-Sleeve Lock



PART NUMBER	BALL SIZE	TONGUE TYPE	SAE CLASS	CAPACITY	FINISH	UNIT WT.	CASE QTY.	CASE WT.	REF. #
TR-CCA7K-2.00	2"	Adjustable	4	7,000 lb.	Black	11.20 lb.	175 pc.	2,000 lb.	CTA-196
TR-CCA12.5K-2.31	2-15/16"	Adjustable	4	12,500 lb.	Black	13 lb.	150 pc.	1,990 lb.	CTA-296

• With Grade 8 Bolts/Nuts

## Adjustable-Top Lever Latch



PART NUMBER	BALL SIZE	TONGUE TYPE	SAE CLASS	CAPACITY	FINISH	UNIT WT.	CASE QTY.	CASE WT.	REF. #
TR-CCA15K-2.31	2-15/16"	Adjustable	4	15,000 lb.	Black	13.23 lb.	200 pc.	2,734 lb.	CTA-280

• With Grade 8 Bolts/Nuts

## Mounting Bracket



PART NUMBER	DESCRIPTION	CAPACITY	FINISH	UNIT WT.	CASE QTY.	CASE WT.	REF. #
TR-ACMB-6	Mounting Bracket, 6 Hole / 5 Position	15,000 lb.	Black	6.17 lb.	250 pc.	1,543 lb.	CTA-CB6

The specifications and dimensions above are for reference only.

# Stamped Couplers

## Straight Tongue



TR-CS2K-1.88X2.00



TR-CS2KZ-1.88X2.50

PART NUMBER	BALL SIZE	TONGUE SIZE	SAE CLASS	CAPACITY	FINISH	UNIT WT.	CASE QTY.	CASE WT.	REF. #
TR-CS2KZ-1.88X2.00	1-7/8"	2"	1	2,000 lb.	Zinc	2.50 lb.	500 pc.	1,290 lb.	CT-2001-Z
TR-CS2K-1.88X2.00	1-7/8"	2"	1	2,000 lb.	Oily	2.50 lb.	500 pc.	1,290 lb.	CT-2001-O
TR-CS2KZ-1.88X2.50	1-7/8"	2-1/2"	1	2,000 lb.	Zinc	2.60 lb.	500 pc.	1,340 lb.	CT-2002-Z
TR-CS2K-1.88X2.50	1-7/8"	2-1/2"	1	2,000 lb.	Oily	2.60 lb.	500 pc.	1,340 lb.	CT-2002-O
TR-CS2KZ-1.88X3.00	1-7/8"	3"	1	2,000 lb.	Zinc	3.02 lb.	500 pc.	1,550 lb.	CT-2003-Z
TR-CS2K-1.88X3.00	1-7/8"	3"	1	2,000 lb.	Oily	3.02 lb.	500 pc.	1,550 lb.	CT-2003-O
TR-CS3.5KZ-2.00X2.00	2"	2"	2	3,500 lb.	Zinc	4.10 lb.	500 pc.	2,090 lb.	CT-3001-Z
TR-CS3.5K-2.00X2.00	2"	2"	2	3,500 lb.	Oily	4.10 lb.	500 pc.	2,090 lb.	CT-3001-O
TR-CS3.5KZ-2.00X2.50	2"	2-1/2"	2	3,500 lb.	Zinc	4.20 lb.	500 pc.	2,140 lb.	CT-3002-Z
TR-CS3.5K-2.00X2.50	2"	2-1/2"	2	3,500 lb.	Oily	4.20 lb.	500 pc.	2,140 lb.	CT-3002-O
TR-CS3.5KZ-2.00X3.00	2"	3"	2	3,500 lb.	Zinc	4.40 lb.	500 pc.	2,240 lb.	CT-3003-Z
TR-CS3.5K-2.00X3.00	2"	3"	2	3,500 lb.	Oily	4.40 lb.	500 pc.	2,240 lb.	CT-3003-O
TR-CS5KZ-2.00X3.00	2"	3"	2	5,000 lb.	Zinc	5.20 lb.	500 pc.	2,640 lb.	CT-5003-Z
TR-CS5K-2.00X3.00	2"	3"	2	5,000 lb.	Oily	5.20 lb.	500 pc.	2,640 lb.	CT-5003-O

## A-Frame & Yoke Style A-Frame



TR-CA5K-2.00



TR-CAY8K-2.00

PART NUMBER	BALL SIZE	TONGUE TYPE	SAE CLASS	CAPACITY	FINISH	UNIT WT.	CASE QTY.	CASE WT.	REF. #
TR-CA5K-2.00	2"	A-Frame	3	5,000 lb.	Black	6.50 lb.	250 pc.	1,665 lb.	CA-5100-B
TR-CAY8K-2.00	2"	A-Frame	4	8,000 lb.	Black	7.50 lb.	220 pc.	1,690 lb.	CA-5210-B
TR-CA14K-2.31	2-5/16"	A-Frame	4	14,000 lb.	Black	8.50 lb.	250 pc.	2,165 lb.	CA-5400-B

The specifications and dimensions above are for reference only.

# Gooseneck Couplers & Winches



TR-CGR25K-2.31

TR-CGS25K-2.31

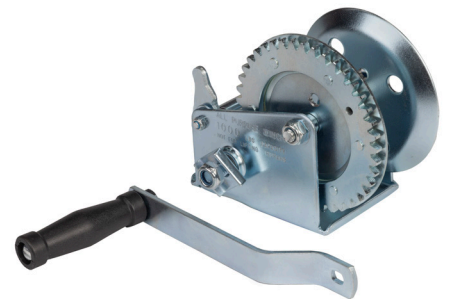
## Round & Square Gooseneck Couplers

PART NUMBER	BALL SIZE	DESCRIPTION	CAPACITY	UNIT WT.	CASE QTY.	CASE WT.	REF. #
TR-CGR25K-2.31	2-15/16"	Round Adjustable Gooseneck Coupler, 29" Retracted Height w/8" Travel, 4-1/2" Diameter Outer Tube, 4" Diameter Inner Tube w/Cast Locking Plate & 3/4" Load Bearing Pin, 2 Set Screws	25,000 lb.	54.73 lb.	30 pc.	1,642 lb.	GCPN-25008
TR-CGR30K-2.31	2-15/16"	Round Adjustable Gooseneck Coupler, 29" Retracted Height w/8" Travel, 4-1/2" Diameter Outer Tube, 4" Diameter Inner Tube w/Cast Locking Plate & 3/4" Load Bearing Pin, 2 Set Screws	30,000 lb.	61.36 lb.	30 pc.	1,841 lb.	GCPN-30008
TR-CGS25K-2.31	2-15/16"	Square Adjustable Gooseneck Coupler, 29" Retracted Height w/8" Travel, 4-1/2" Diameter Outer Tube, 4" Diameter Inner Tube w/Cast Locking Plate & 3/4" Load Bearing Pin, 1 Set Screw	25,000 lb.	70.16 lb.	30 pc.	2,105 lb.	GCSQ-25008

• All gooseneck couplers with load-bearing pin meet SAE J2638 standard

## Hand Winches

PART NUMBER	DESCRIPTION	UNIT WT.	BOX QTY.	BOX WT	BOXES PER SKID	REF. #
TR-WH1K	Single-Speed Trailer Winch, 1,000 lb. Capacity, Zinc Plated	5.51 lb.	6 pc.	37 lb.	25 pc.	HW-1000
TR-WH1.4K	Single-Speed Trailer Winch, 1,400 lb. Capacity, Zinc Plated	5.86 lb.	6 pc.	40 lb.	25 pc.	HW-1400
TR-WH1.6K	Single-Speed Trailer Winch, 1,600 lb. Capacity, Zinc Plated	7.72 lb.	4 pc.	29 lb.	30 pc.	HW-1600
TR-WH2K	Two-Speed Trailer Winch, 2,000 lb. Capacity, Zinc Plated	8.27 lb.	4 pc.	35 lb.	30 pc.	HW-2000



TR-WH1K

The specifications and dimensions above are for reference only.

## Brake Winches

PART NUMBER	DESCRIPTION	UNIT WT.	BOX QTY.	BOX WT	BOXES PER SKID	REF. #
TR-WB1K	Self-Activating Brake Winch, 1,000 lb. Capacity, Zinc Plated	5.51 lb.	6 pc.	37 lb.	25 pc.	BW-1000
TR-WB1.5K	Self-Activating Brake Winch, 1,500 lb. Capacity, Zinc Plated	7.50 lb.	6 pc.	50 lb.	25 pc.	BW-1400



TR-WB1K

## Winch Straps

PART NUMBER	DESCRIPTION	BOX QTY.	BOX WT.	BOXES PER SKID
TR-WH1KS	Nylon 2" x 26.2" Strap w/Snap Hook, 1,000 lb. Capacity	39 pc.	41 lb.	24
TR-WH1.4KS	Nylon 2" x 26.2" Strap w/Snap Hook, 1,400 lb. Capacity	36 pc.	37 lb.	24
TR-WH1.6KS	Nylon 2" x 26.2" Strap w/Snap Hook, 1,600 lb. Capacity	35 pc.	40 lb.	24
TR-WH2KS	Nylon 2" x 26.2" Strap w/Snap Hook, 2,000 lb. Capacity	35 pc.	44 lb.	24



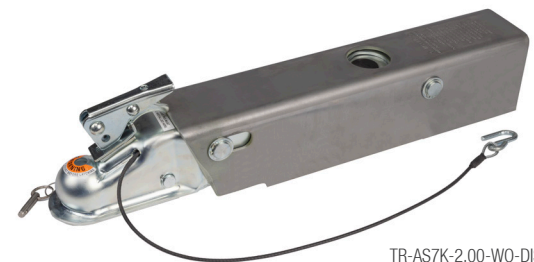
TR-WH1KS

The specifications and dimensions above are for reference only.

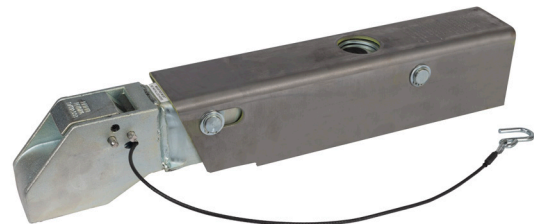
## Surge Actuators

PART NUMBER	DESCRIPTION
TR-AS7K-2.00-WO-DISC	7K, 2" Ball, Weld-On, Disc
TR-AS8.4K-2.00-WO-DISC	8.4K, 2" Ball, Weld-On, Disc

The specifications and dimensions above are for reference only.



TR-AS7K-2.00-WO-DISC



TR-AS8.4K-2.00-WO-DISC

# Accessories & Parts

## Trailer Jack Accessories & Parts

PART NUMBER	DESCRIPTION	UNIT WT.	CRATE QTY.	CRATE WT.	REF #
TR-AJF-2.00	Jack Foot w/hardware, 2" Tube, Zinc	1.20 lb.	1,000 pc.	1,200 lb.	JF-99
TR-AJFHD-2.00	Heavy-Duty Foot w/hardware, 2" Tube	1.90 lb.	1,000 pc.	1,780 lb.	JF-100-Z
TR-AJDL9.50-2.00	Drop Leg w/hardware, 9-1/2", 2" Tube	2.85 lb.	500 pc.	1,425 lb.	F-1005H-Z
TR-AJC-6.00	Removable 6" Caster Wheel, 2" Tube	4.76 lb.	300 pc.	1,428 lb.	JC-101
TR-AJBSP	Bottom Support Plate for A-Frame Jacks	0.69 lb.	3,000 pc.	2,079 lb.	JSP-100
TR-AMBR-P	Weld-On Retaining Mounting Bracket Plate	1.20 lb.	2,000 pc.	2,400 lb.	TJB-MB
TR-AMBR-R	Retaining Ring	0.02 lb.	2,500 pc.	50 lb.	SNP-RING
TR-AMBJT-2.00	Tubular Mounting Bracket, 2" Tube	1.00 lb.	2,000 pc.	2,000 lb.	TJP-IP
TR-AJCH12K	Crank Handle for 12,000 lb. Jack	2.98 lb.	500 pc.	1,490 lb.	TJD-12000-HD
TR-LE300600-24K	Lunette Eye w/ 5/8" Bolt and Nut, 24,000 lb.	11.68 lb.	180 PC.	2,142 lb.	C48660

The specifications and dimensions above are for reference only.



**Jack Foot**  
TR-AJF-2.00



**Heavy-Duty Foot**  
TR-AJFHD-2.00



**Crank Handle**  
TR-AJCH12K



**6" Caster Wheel**  
TR-AJC-6.00



**Lunette Eye**  
TR-LE300600-24K



**A-Frame Support Plate**  
TR-AJBSP



**Mounting Bracket Plate**  
TR-AMBR-P



**Retaining Ring**  
TR-AMBR-R



**Tubular Mounting Bracket**  
TR-AMBJT-2.00



**Drop Leg**  
TR-AJDL9.50-2.00

## Trailer Jack Accessories & Parts

PART NUMBER	DESCRIPTION	REF #
TR-AJHTW-2K	Replacement Jack Handle, 2,000 lb.	TJA-2000-HD
TR-AJHTW-5K	Replacement Jack Handle, 5,000 lb.	TJA-5000-HD
TR-AJHTW-7K	Replacement Jack Handle, Top Wind 7,000 lb. Drop Leg Jack	TJD-7000-HD
TR-AJHSW-7K	Replacement Jack Handle, Side Wind 7,000 lb. Drop Leg Jack	TJD-7000S-HD
TR-AJGK-12K	Replacement Gear Kit for 12,000 lb. Drop Leg Jack	TJD-12000-GR
TR-AMJHSW-1K-1.5K	Replacement Marine Jack Handle for Side Wind, 1K, 1.2K, 1.5K	MJ-1000B-HD, MJ-1200B-HD, MJ-1500B-HD
TR-AMJMBK-1K-1.5K	Replacement Marine Jack Mounting Bracket Kit, 1K, 1.2K, 1.5K	MJ-1000B-MK, MJ-1200-MK, MJ-1500-MK
TR-CRK1.88-2K	Coupler Repair Kit, 1-3/4" Ball, 2,000 lb.	CT-2000-RK
TR-CRK2.00-3.5K	Coupler Repair Kit, 2" Ball, 3,500 lb.	CT-3000-RK
TR-CRK2.00-5K	Coupler Repair Kit, 2" Ball, 5,000 lb.	CT-5100-RK

The specifications and dimensions above are for reference only.



**Jack Handle, Top Wind**

TR-AJHTW-2K  
TR-AJHTW-5K



**Jack Handle, Top Wind**

TR-AJHTW-7K



**Jack Handle, Side Wind**

TR-AJHSW-7K

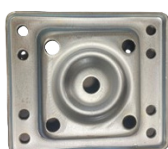


**Marine Jack Handle, Side Wind**

TR-AMJHSW-1K  
TR-AMJHSW-1.2K  
TR-AMJHSW-1.5K



TR-AMJMBK-1K



TR-AMJMBK-1.2K



TR-AMJMBK-1.5K

**Marine Jack Mounting Bracket Kit**

TR-AMJMBK-1K  
TR-AMJMBK-1.2K  
TR-AMJMBK-1.5K



**Coupler Repair Kit**

TR-CRK2.00-3.5K



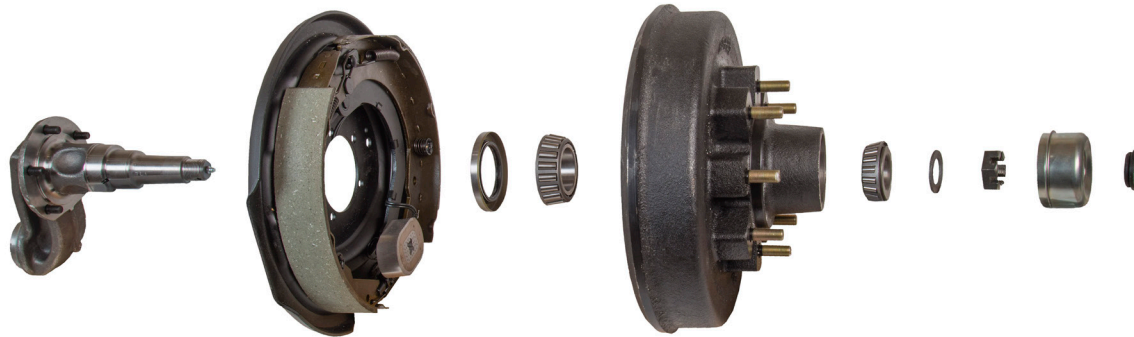
**Gear Kit for 12K Drop Leg Jack**

TR-AJGK-12K

# High Speed Products

## Axle & Suspension Components

- TruRyde electric & hydraulic drum brakes
- TruRyde idler hubs and brake drums
- Tapered roller bearings
- Grease seals
- Spindle fasteners and accessories
- Dust caps
- Leaf springs - double eye & slipper multi leaf and single leaf MH
- Equalizers - cast and fabricated
- Stampings - hangers, tie plates, shackle links, spring seats and brake flanges
- Spindles - butt weld straight & drop, boat trailer drop, round & square bar stock
- Mobile home axle products
- Misc. - bushings, rim clamps, U-Bolts



## Production Machining

- Production machining capabilities machined to print
- Spindle brake flange welding capabilities
- CNC horizontal lathes with live tooling CNC
- Vertical and horizontal mills 3 & 4 axis quality lab



## TruRyde & DeeMaxx Disc Brakes

- 3.5k, 6k, 7k, 8k
- 10-12k single wheel
- 12-16k dual wheel
- TruRyde-DeeMaxx value line 3.5k and 6k
- Integrated or slip-over vented rotors, hubs, calipers and brackets
- High performance brake lines, DOT approved
- Deemaxx EOH



## Packaged Parts

- Bearing, dust cap, and grease seal kits, tie plate and U-Bolt kits
- Shackle bolt and shackle link kits
- Lug nut and wheel stud kits
- Bushing kits
- Idler hub and brake drum kits
- boxed brake assemblies
- Hanger & equalizer kits
- Pre-greased hub and drum kits



## EMCO Industries

### Leaf Spring Manufacturing

- Double eye & slipper multi leaf and single leaf parabolic
- Heavy-duty 3 leaf tapers
- Specialty springs
- AG rotary cutter blades
- Powder coat capability
- Domestic and off-shore manufacturing locations with quality lab

### Cutter Blades

### Three Leaf Tapered Springs



# Custom Manufactured Components



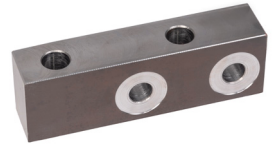
**Bushing**



**Kingpins**



**Planter Clevis**



**Suspension Blocks**



**Machined Forged  
Torsion Arms**



**Torsion Spindles**



**Custom Spindle**



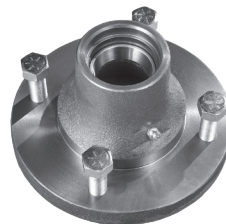
**Dust Cap Driver**



**Drive Shaft**



**Stainless Steel Valve**



**Custom Hubs**

---

# Terms & Conditions

## TERMS

All orders are subject to credit approval by our credit department. Net 30 days from date of shipment, unless specified otherwise in writing by TRP International. All past due accounts shall accrue interest at a rate of 1.5% per month based upon the outstanding balance at the end of the month plus any additional fees incurred in the collection process, including attorney fees.

## PRICES

All shipments will be at the prices in effect at order acceptance, including any possible raw material surcharges that may be implemented. Prices and specifications are subject to change without notice. Minimum order of \$100.00 is required. Any order less than \$100.00 will be subject to a \$25.00 handling charge.

## ORDERS

TRP International's acceptance of customer orders, whether verbal or written does not include an acknowledgment or acceptance on behalf of TRP of any terms or conditions of customers purchase order, whether stated expressly or implied.

## CANCELLATION AND CHANGES

Due to immediate production of manufactured products, orders containing these items are considered firm and are not subject to cancellation or change without approval. Any approved cancellations or changes are subject to additional charges at TRP International's discretion.

## FREIGHT

All shipments are F.O.B. TRP International and are shipped "Freight Collect" unless specified otherwise in writing by TRP. Products are carefully inspected and packed to assure that they will arrive in good condition.

In case of shortage or damage, purchaser should promptly file a claim with the delivering carrier. TRP is not liable for damage or loss of merchandise after it has left our facilities, we will however assist you in filing a claim.

## RETURNS

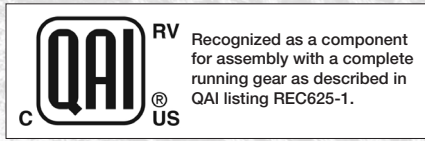
Return requests must be made within 30 days of shipment. Return authorization is required before the items are returned for any reason. We will consider issuing a return authorization for the following reasons; manufacturing defect, order processing error, shipping error, mismarked cartons, or duplicated shipments. Returns for any other reason, and no fault of TRP, are subject to a 20% restocking charge and when authorized, must be returned freight prepaid. Return merchandise will be subject to inspection.

Any discrepancies, additional damage, signs of use, or missing parts will result in an adjustment to the amount of credit issued.

## LIMITED WARRANTY

The products listed in this catalog are warranted by the manufacturers to be free from defects in materials and workmanship for a period of one year from the date of original purchase. This warranty is in lieu of all other warranties expressed or implied. This warranty covers normal use and application and does not cover damage or defect which results from alteration, accident, neglect, improper installation, operation or maintenance.

TRP International's obligation under this warranty is limited to the repair or replacement of the defective part, and in no event shall TRP be liable for reimbursement of consequential, indirect or incidental damages of any kind.



**CORPORATE OFFICE:**

TRP Corporate  
4801 Challenger Drive  
Elkhart, IN 46514  
P: 574.293.0974 F: 574.293.0551  
Email: trpintl@trpintl.com  
www.trpintl.com

**MANUFACTURING SITES:**

Elkhart, IN            Claremore, OK

**TRP LIAISON OFFICE:**

TRP China – Hefei, China

**TRP DISTRIBUTION CENTERS:**

**Indiana:**  
4801 Challenger Drive  
Elkhart, IN 46514  
P: 574.389.9941 F: 574.389.9944  
www.trpintl.com

**Texas:**  
324 S. Town East Blvd.  
Mesquite, TX 75149  
P: 972.279.9863 F: 972.279.9864  
www.trpintl.com



**SUPPLYING THE WORLD.**

